

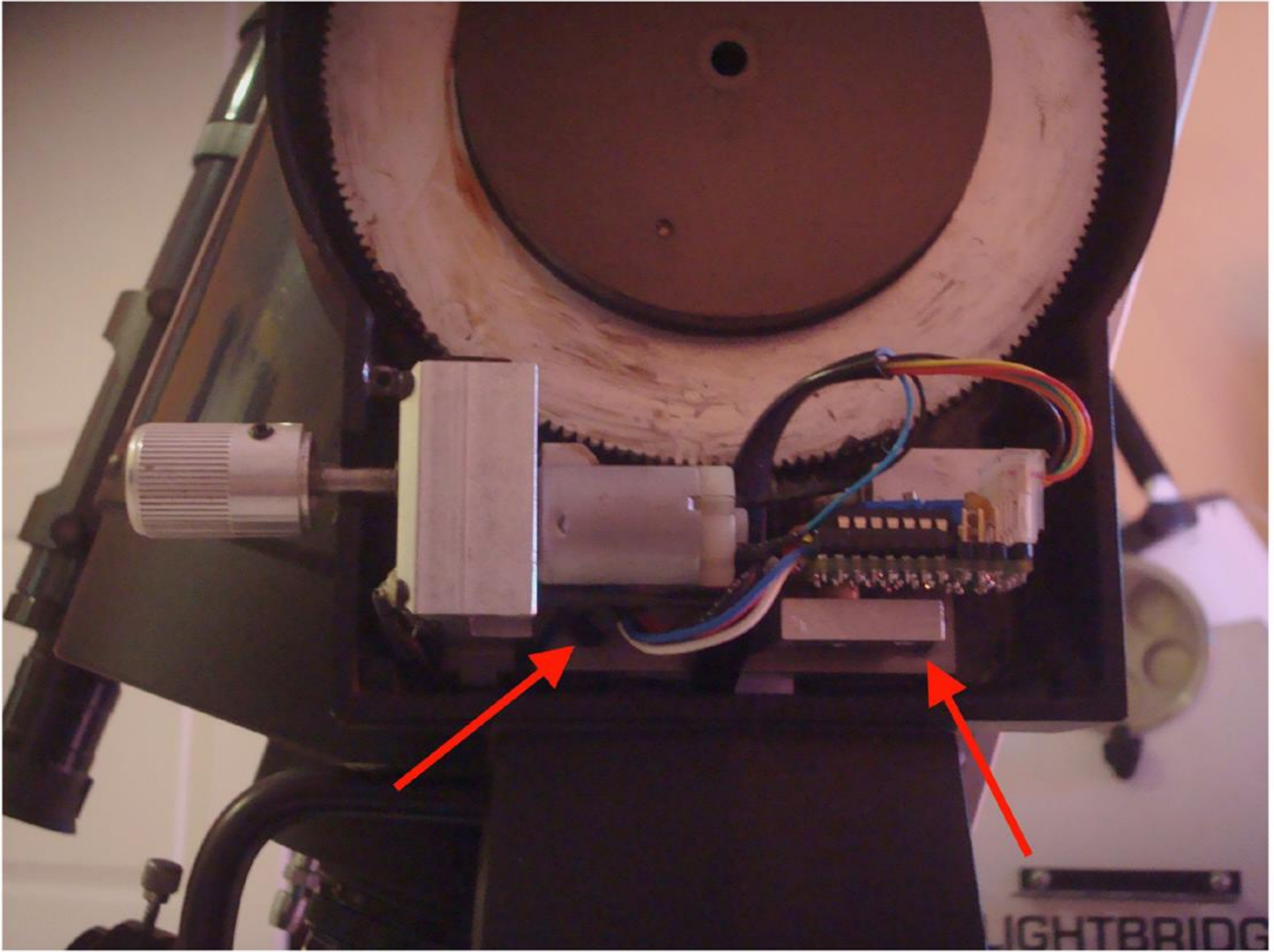
# REASSEMBLY PARTS - LX200 CLASSIC

Olivier GADAL

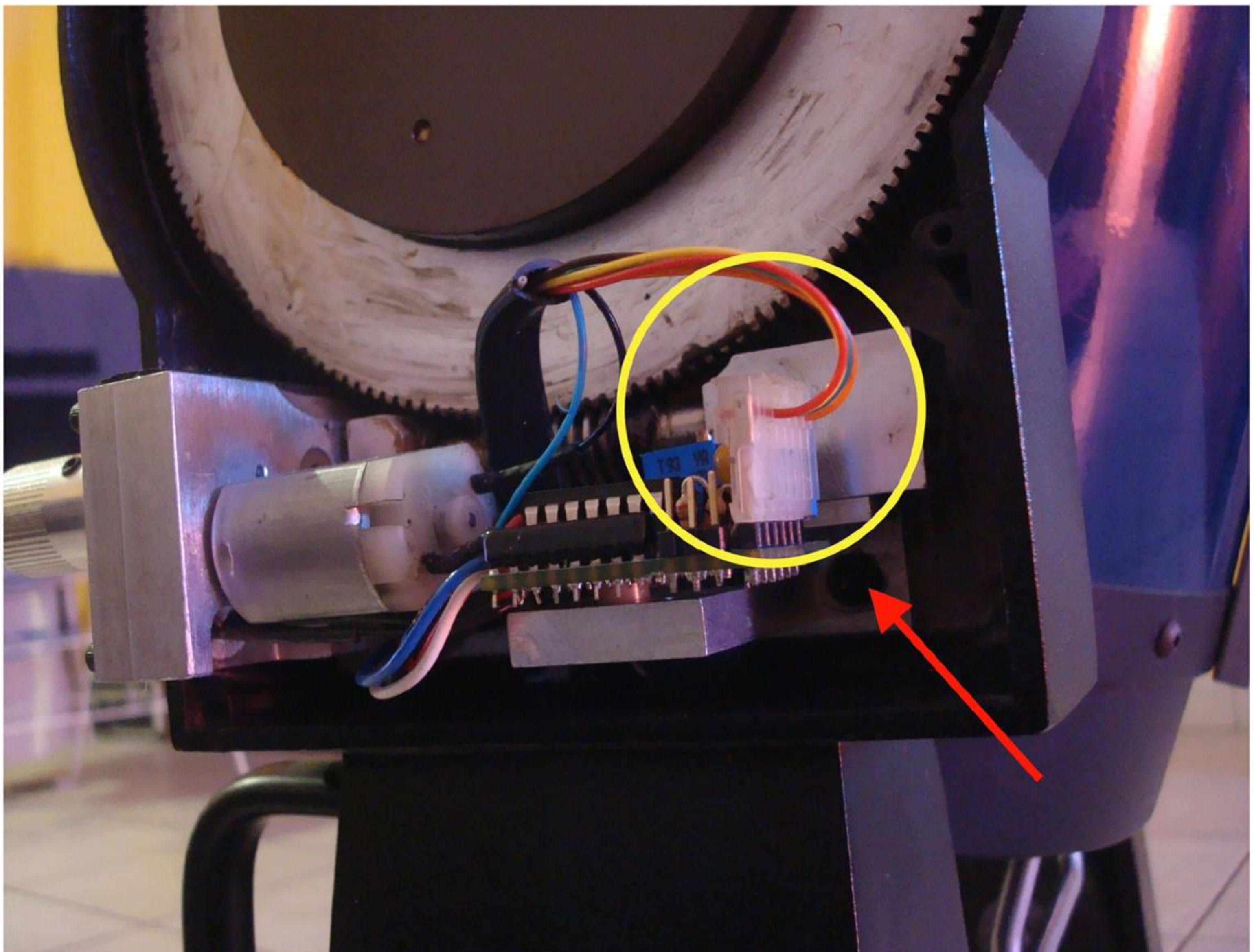
1. Power Panel
2. Mainboard
3. Right Ascension Motor (RA)
4. Declination Motor (DEC)
5. Declination Cable

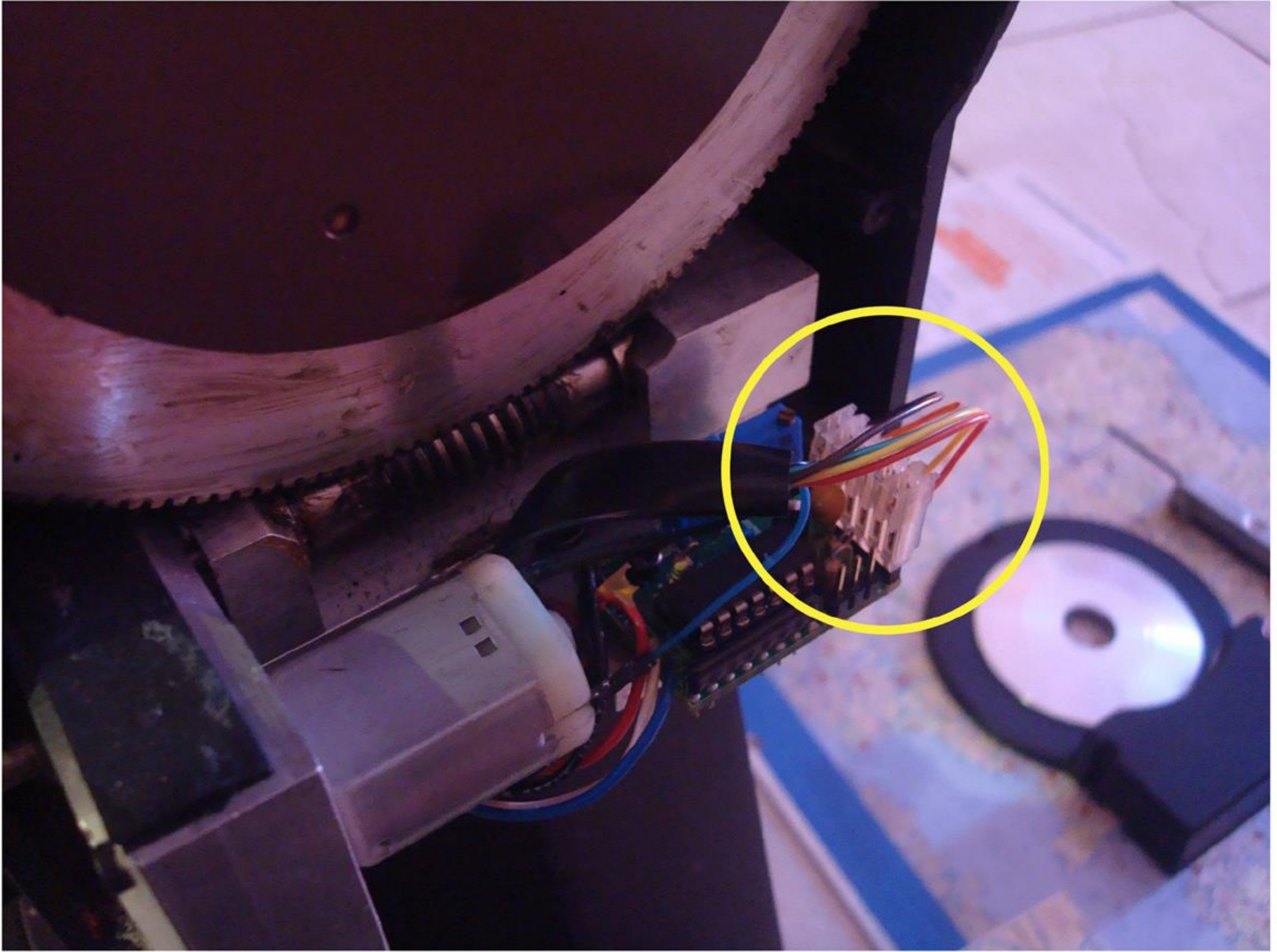


- **Insert Declination motor inside fork and screw twice fixation screws**

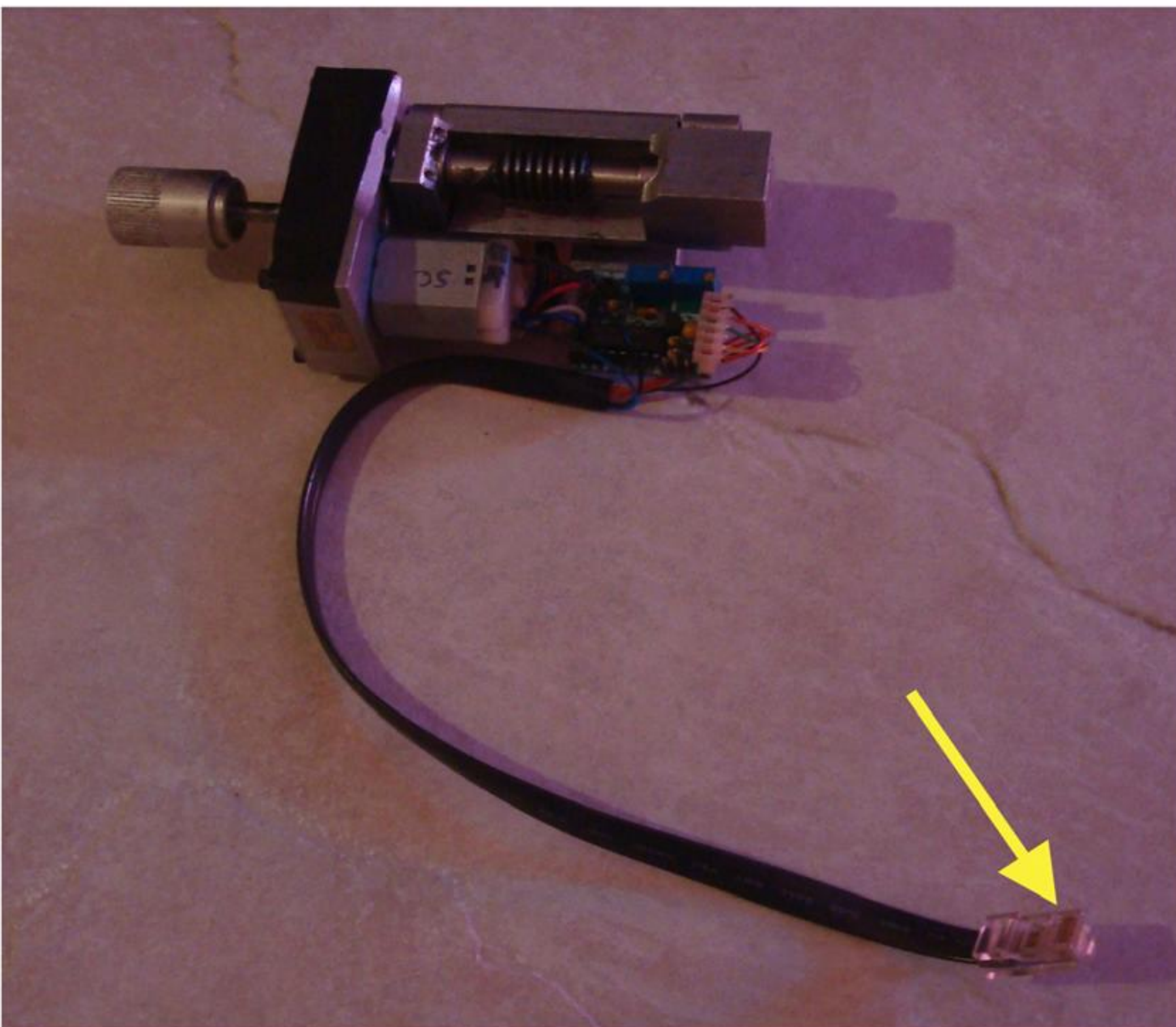


- **Verify correct sense of Declination connector plugin (colored wires)**





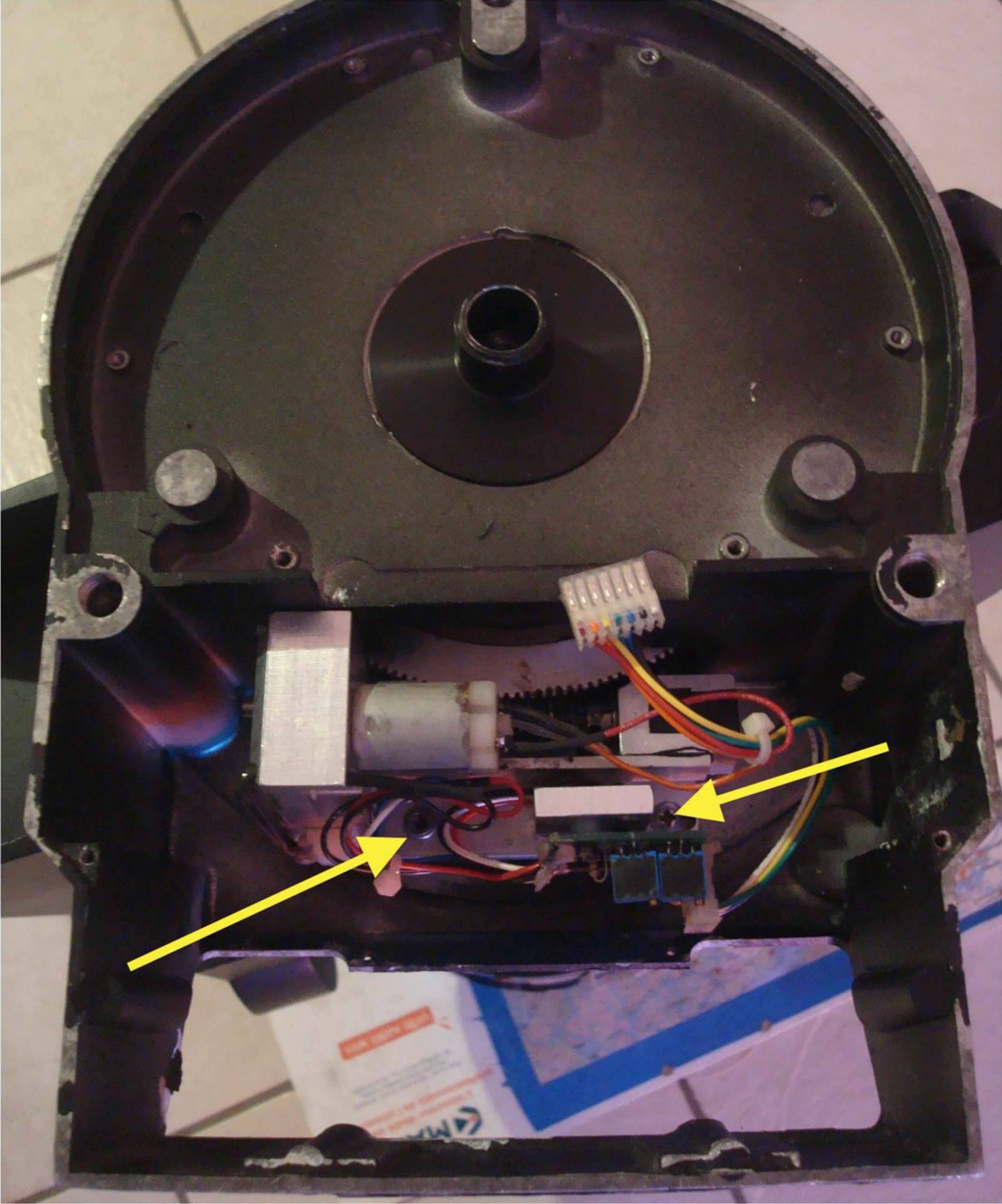
- Declination motor **RJ45** connector

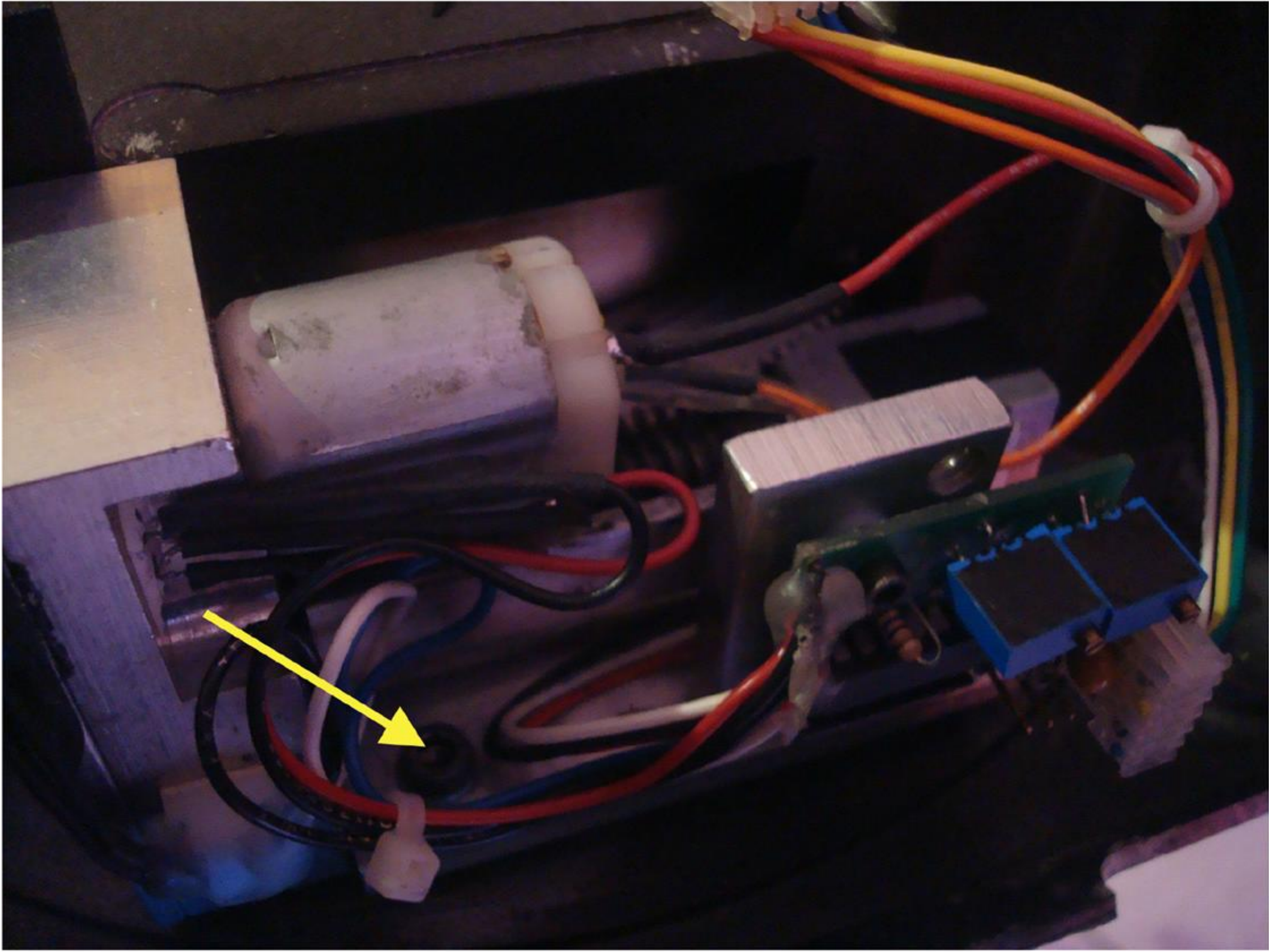


- Plug Declination motor **RJ45** connector into fork connector (inside fork)

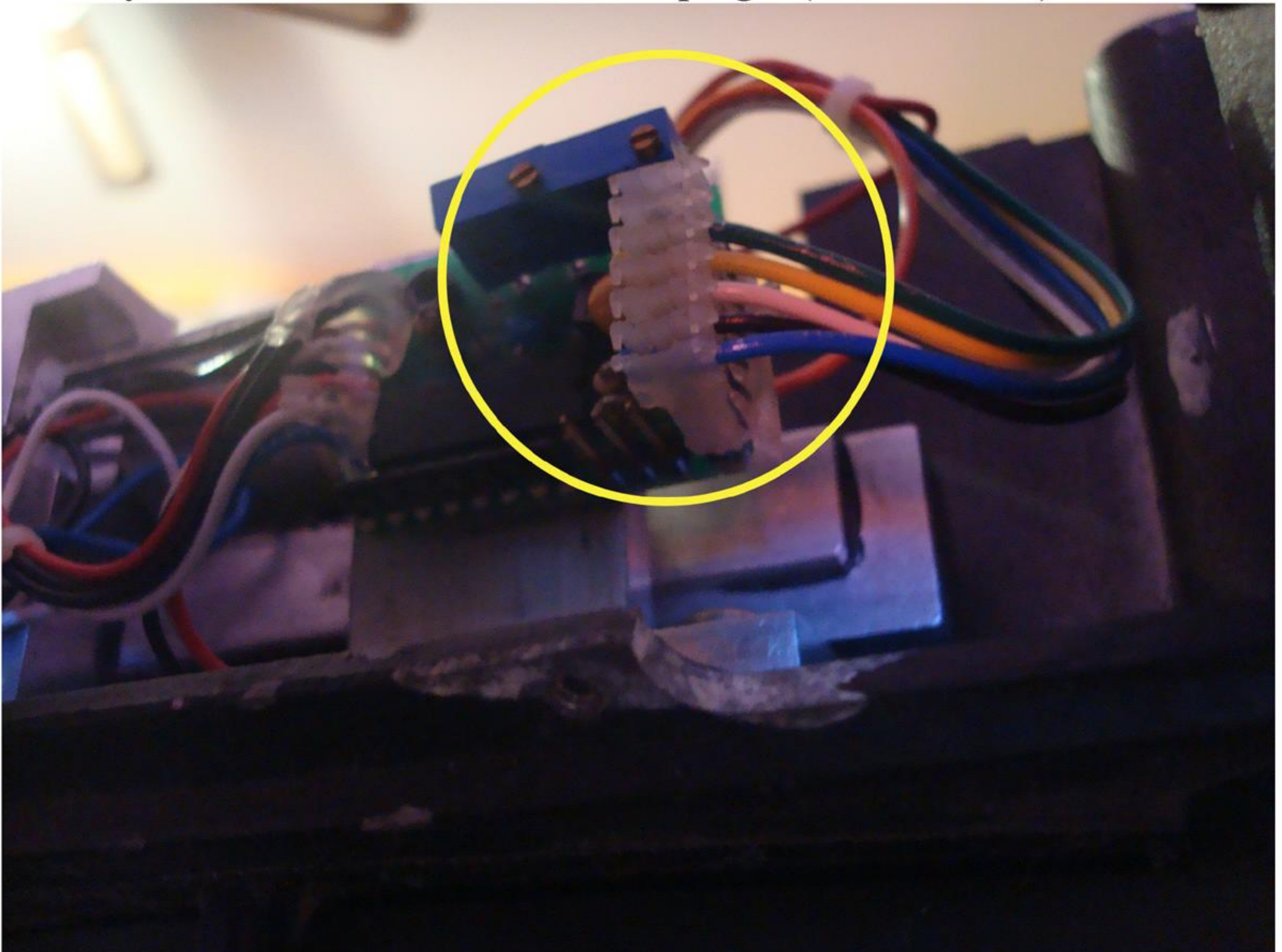


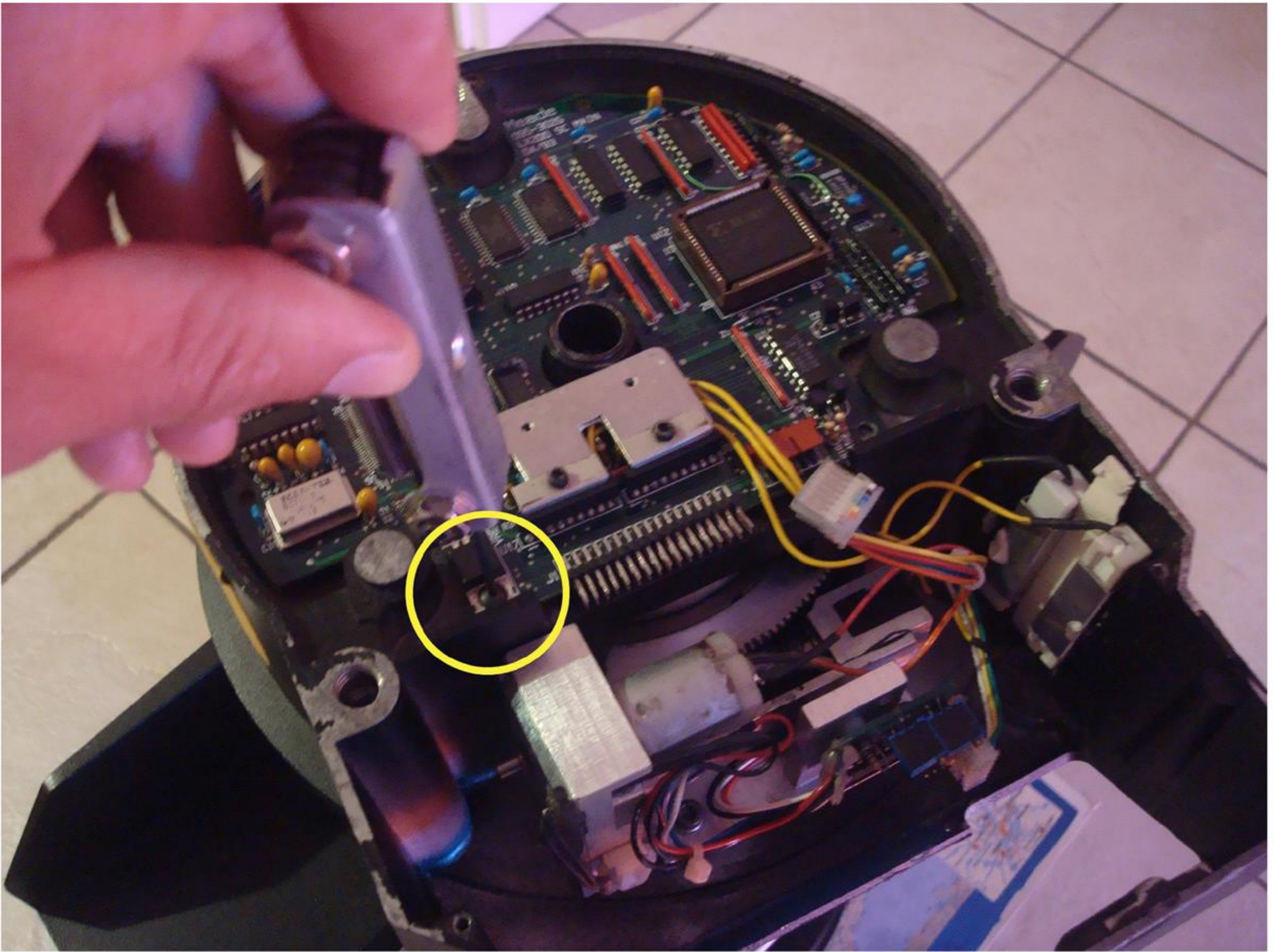
**Right Ascension : Insert RA motor inside base and screw twice fixation screws**





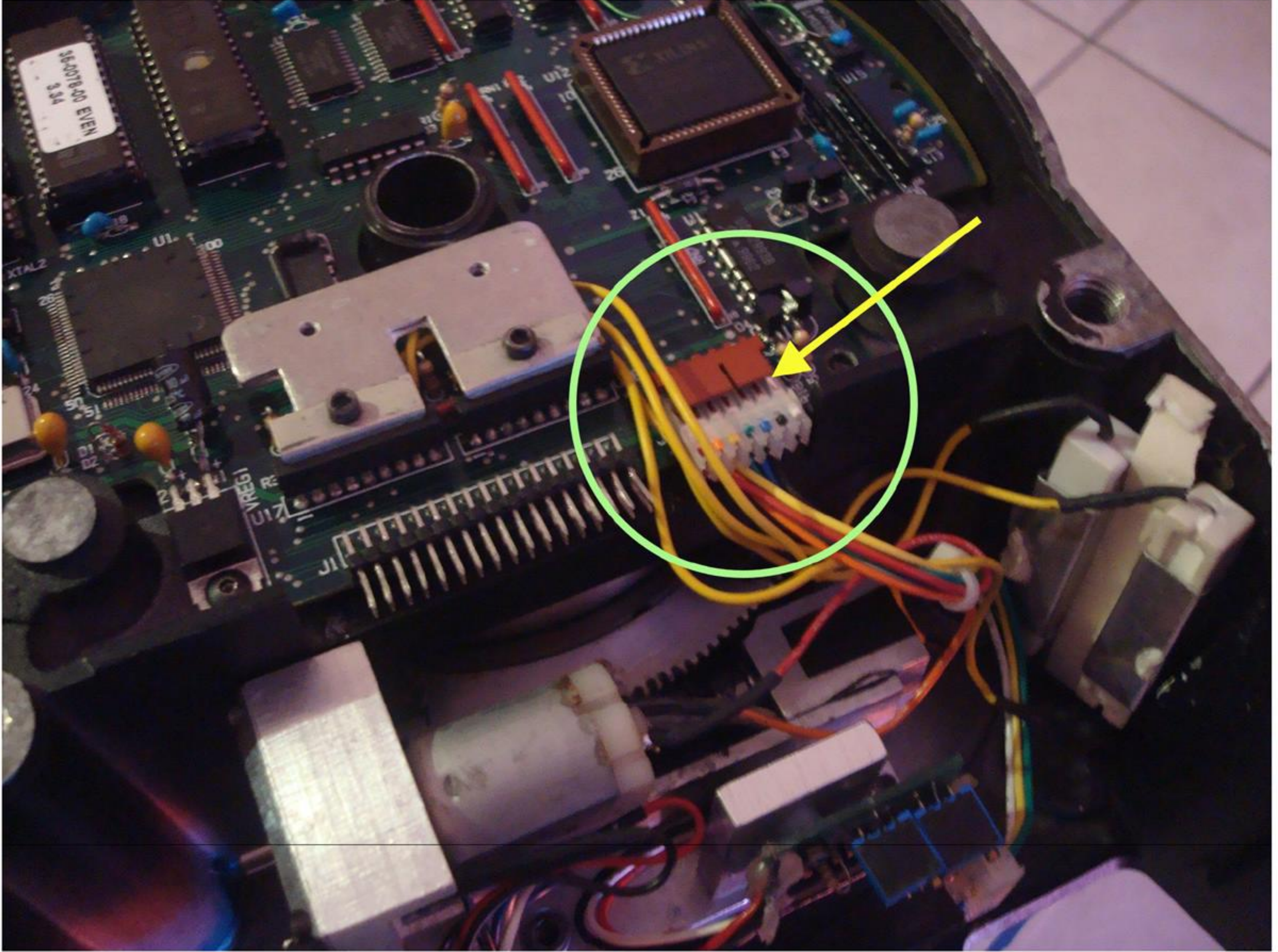
- **Verify correct sense of RA connector plugin (colored wires)**





- **Insert and screw mainboard inside the Telescope base, near RA motor**

- **Plug RA motor connector to mainboard**

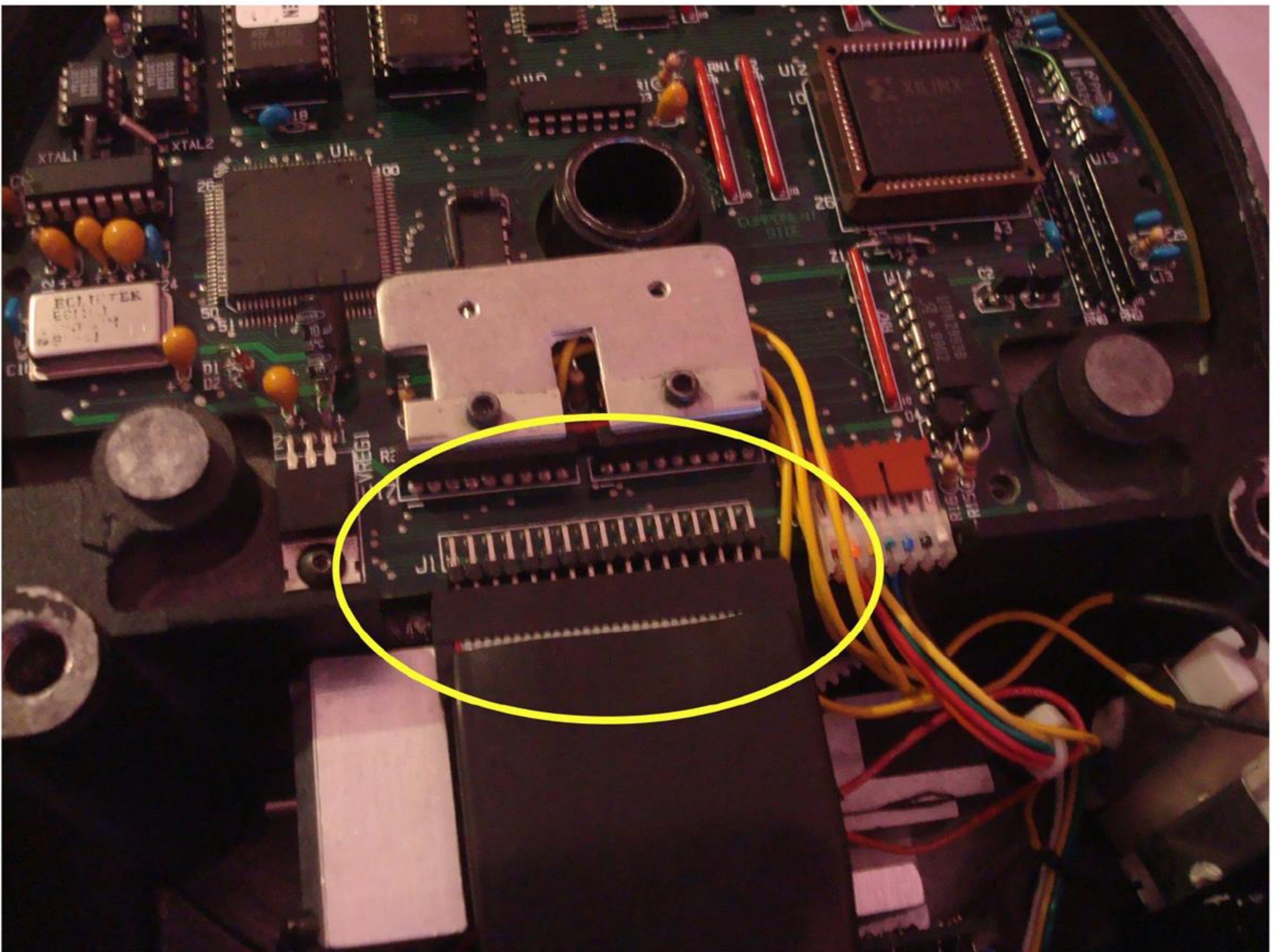
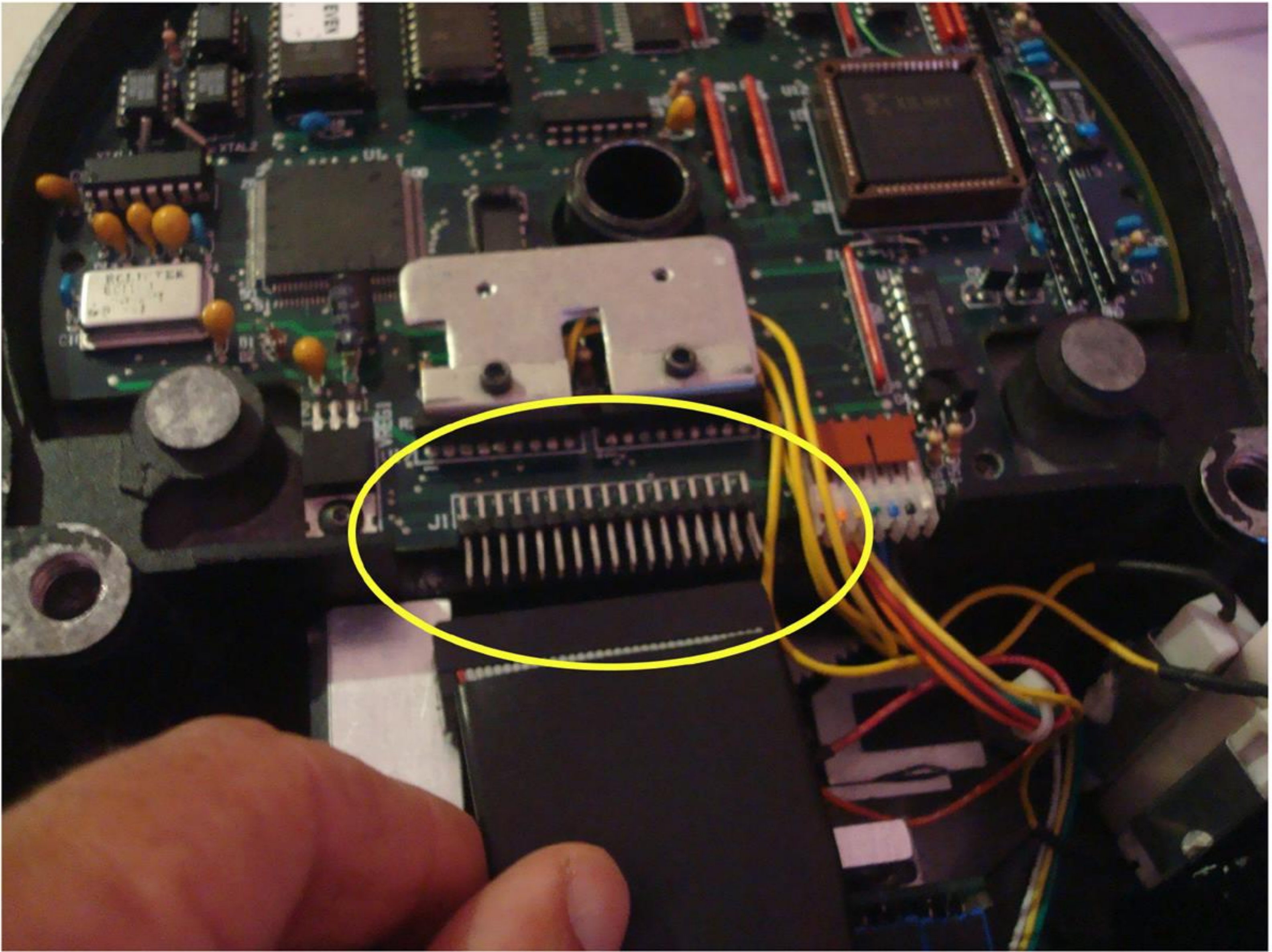


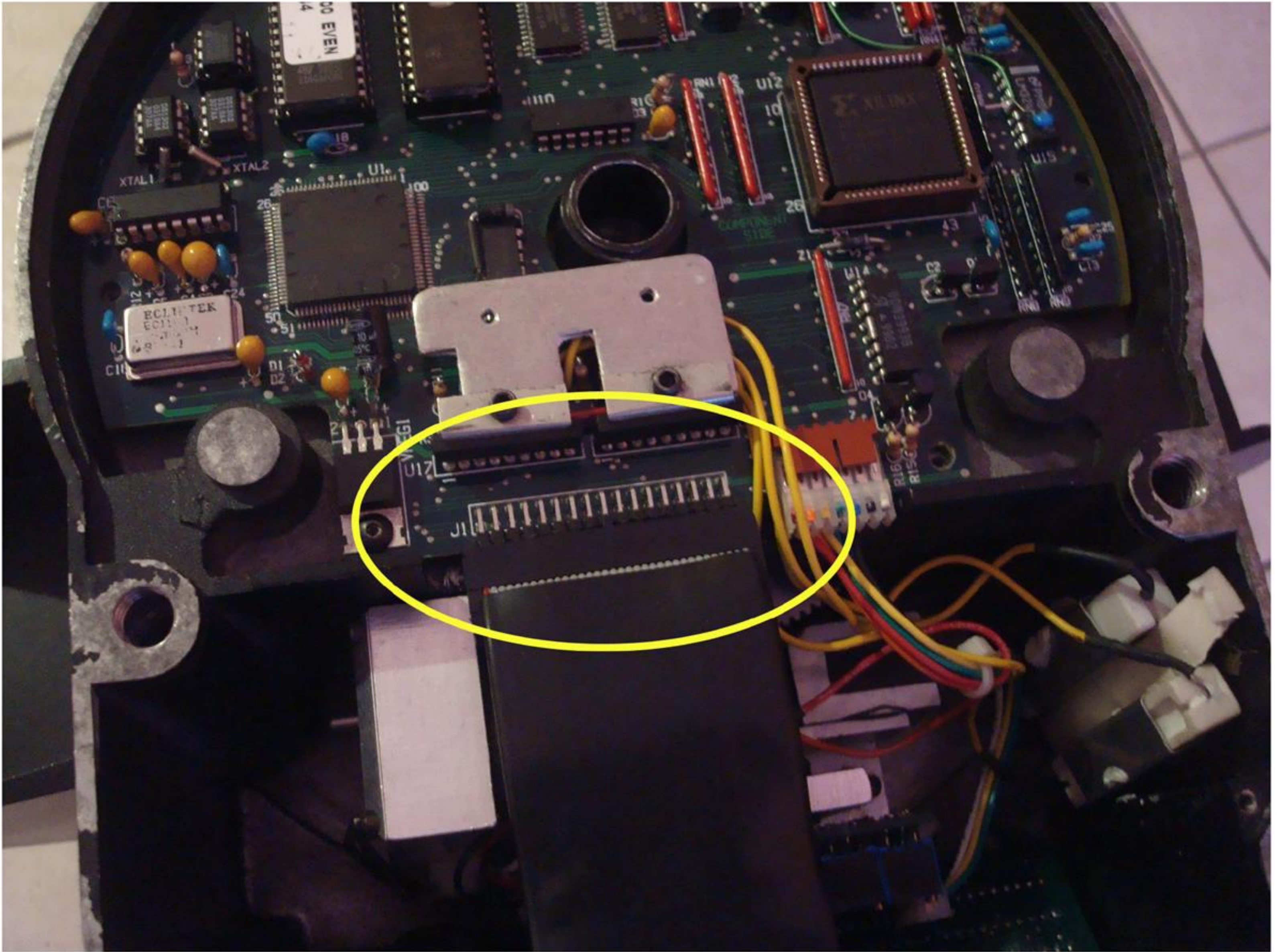


- Insert control panel (power panel) into the telescope base



Plug ribbon cable on 32 pins mainboard connector (don't miss any pin !!!)





- **Final Operation : plug all cables → HandBox, Declination cable, Power**

