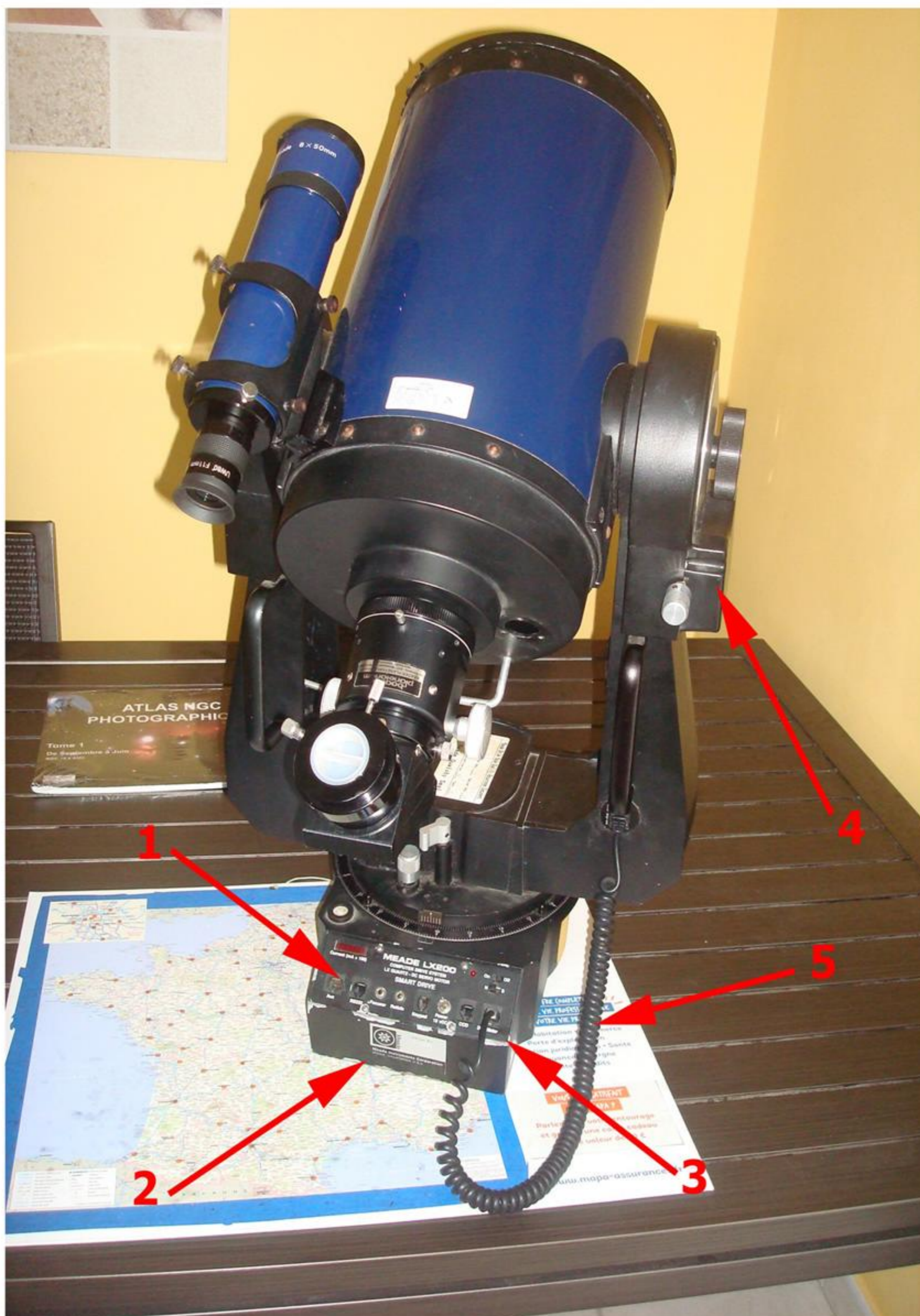


# REMOVE PARTS - LX200 CLASSIC

Olivier GADAL

1. Power Panel
2. Mainboard
3. Right Ascension Motor (RA)
4. Declination Motor (DEC)
5. Declination Cable



## Unplug Declination cable





**Unplug declination motor cable (inside fork)**





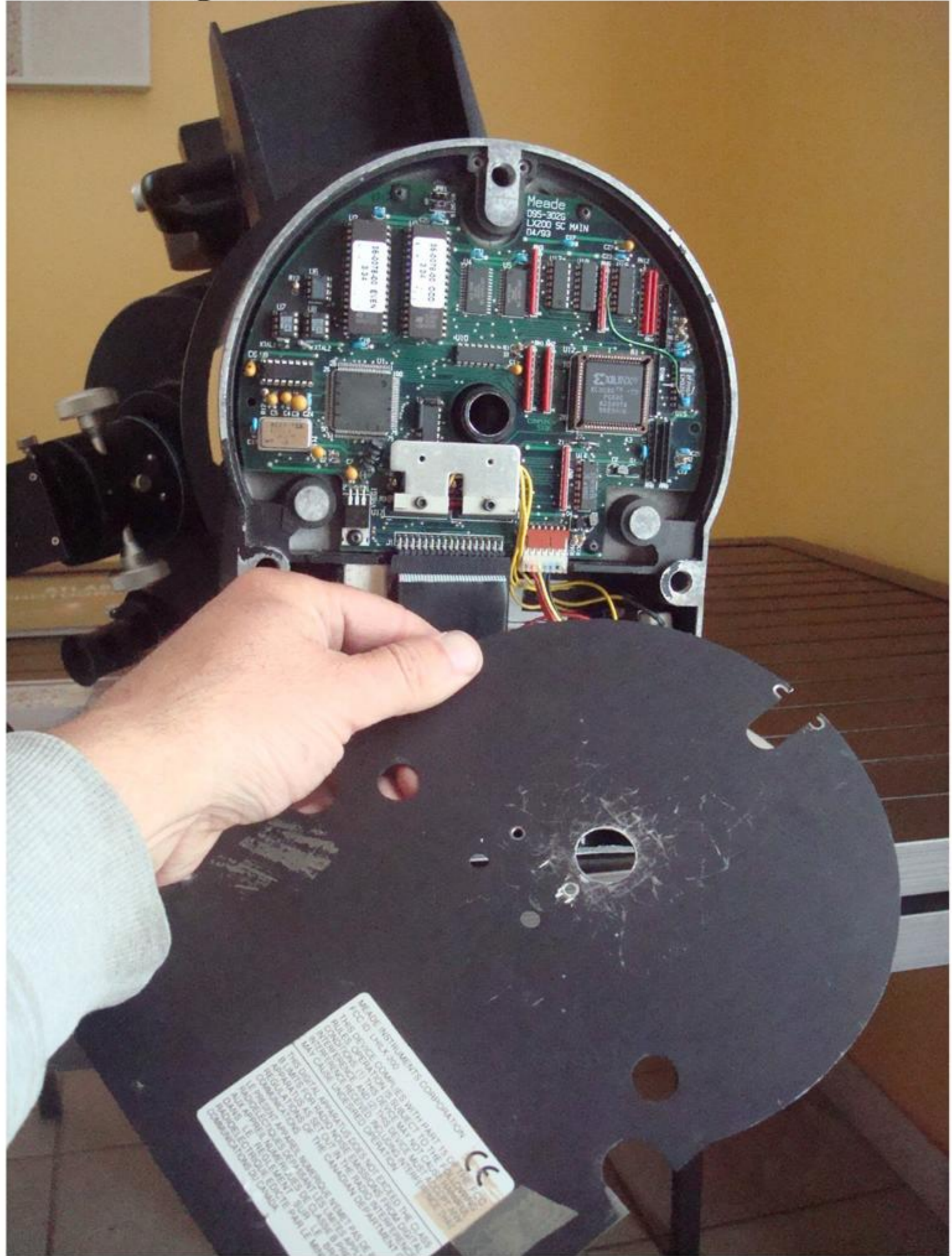
- **UNDER TELESCOPE BASE**

- **Remove screws 1, 2, 3, 4, 5 and 6**

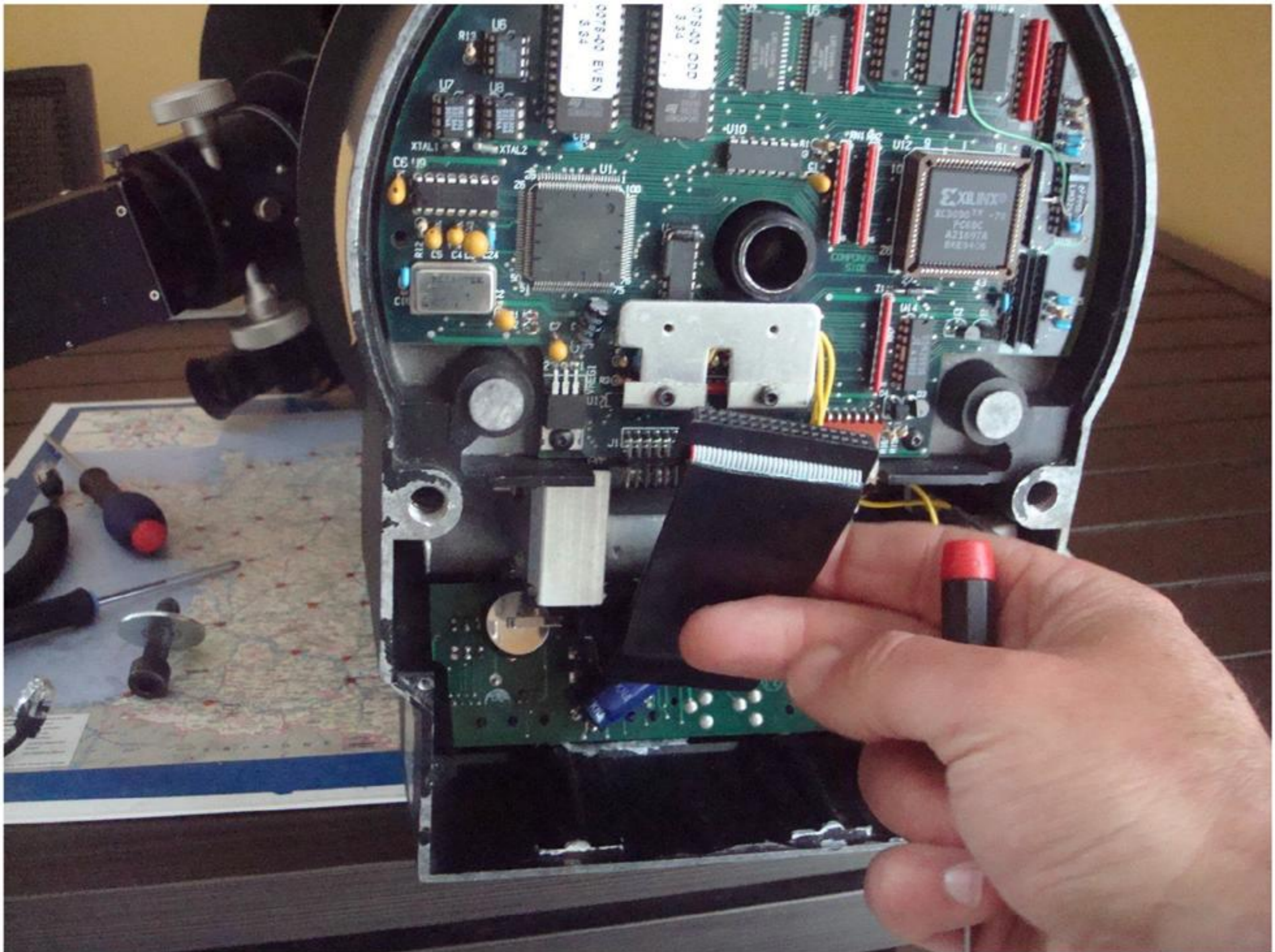
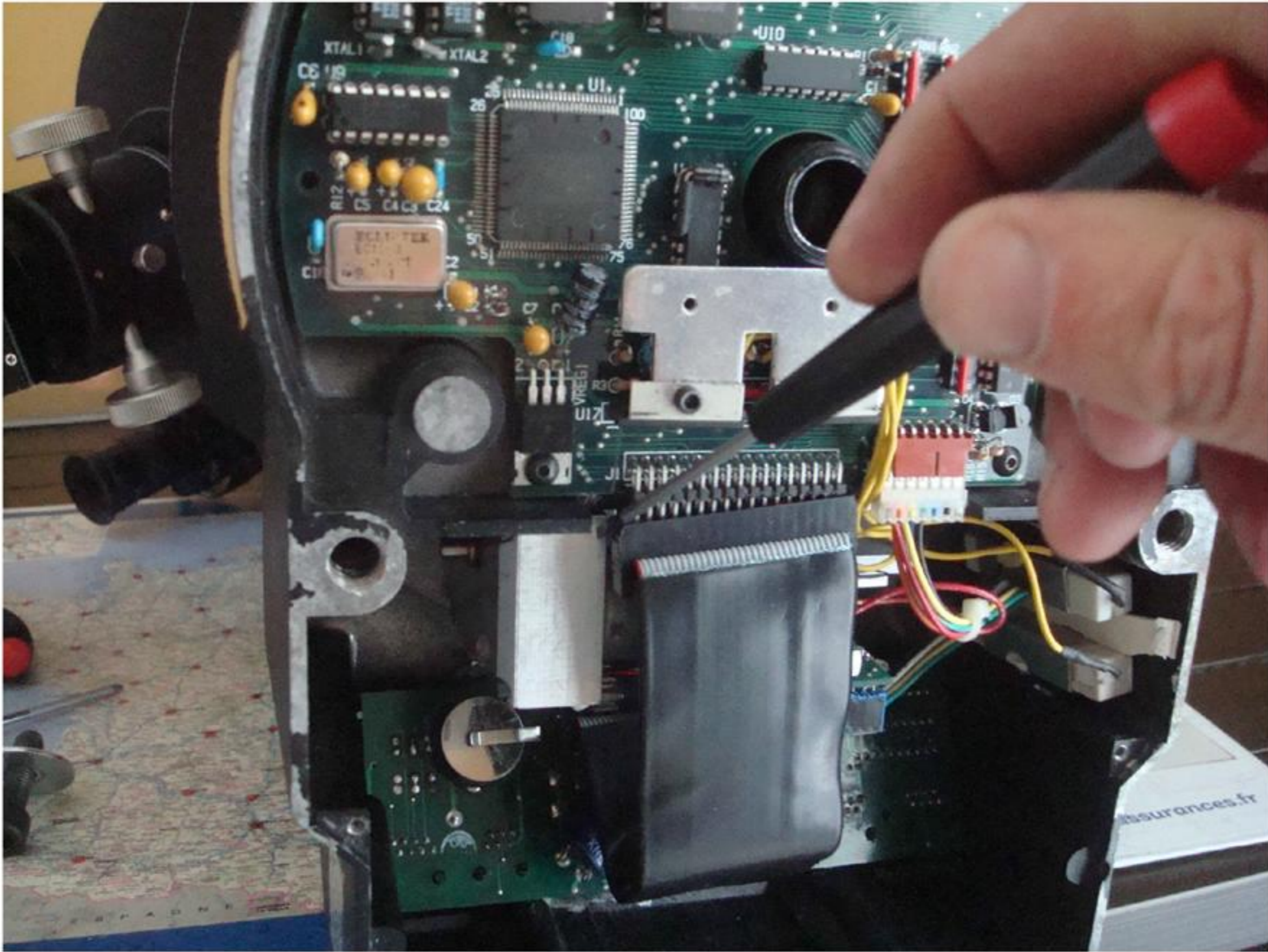




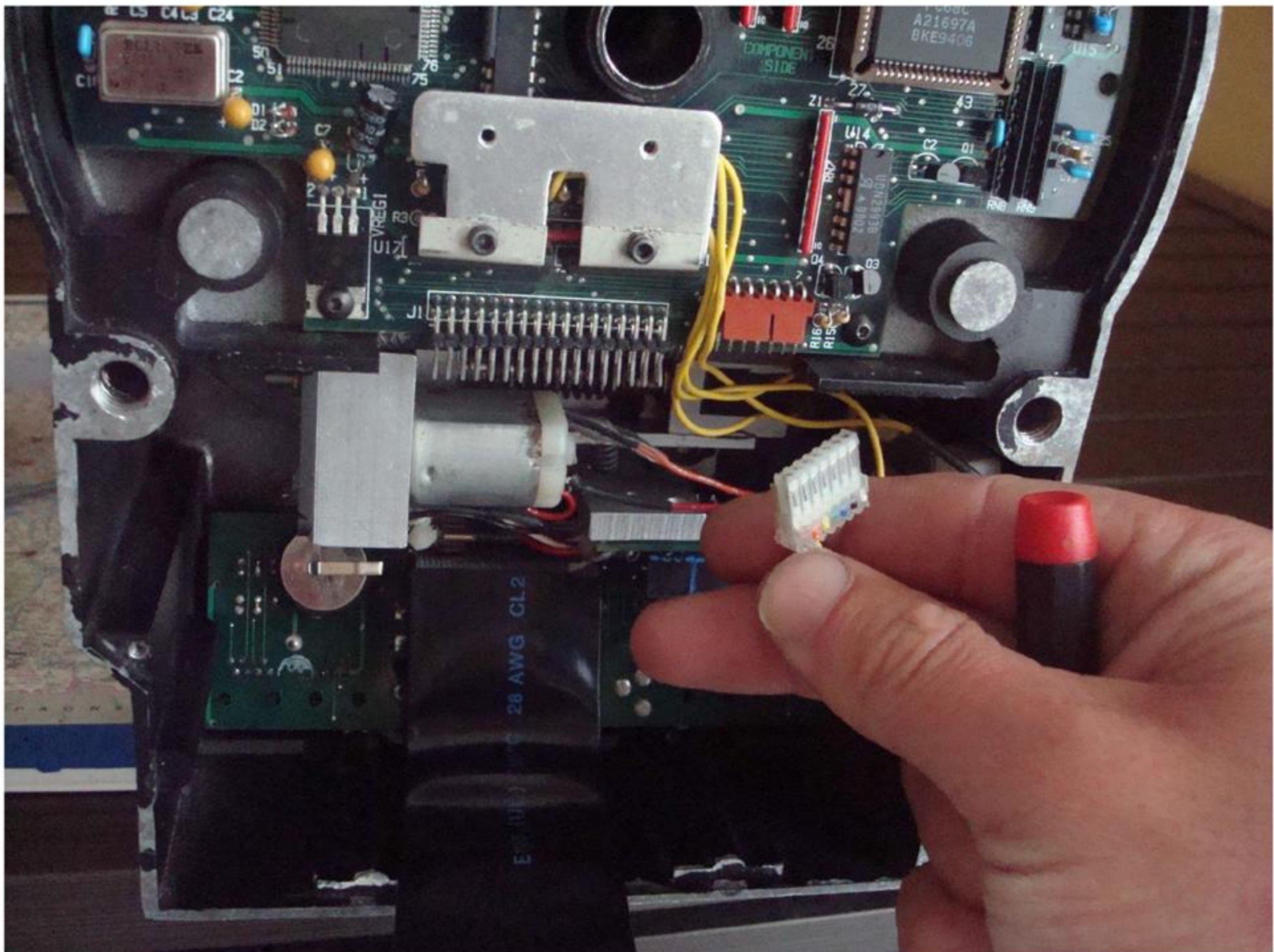
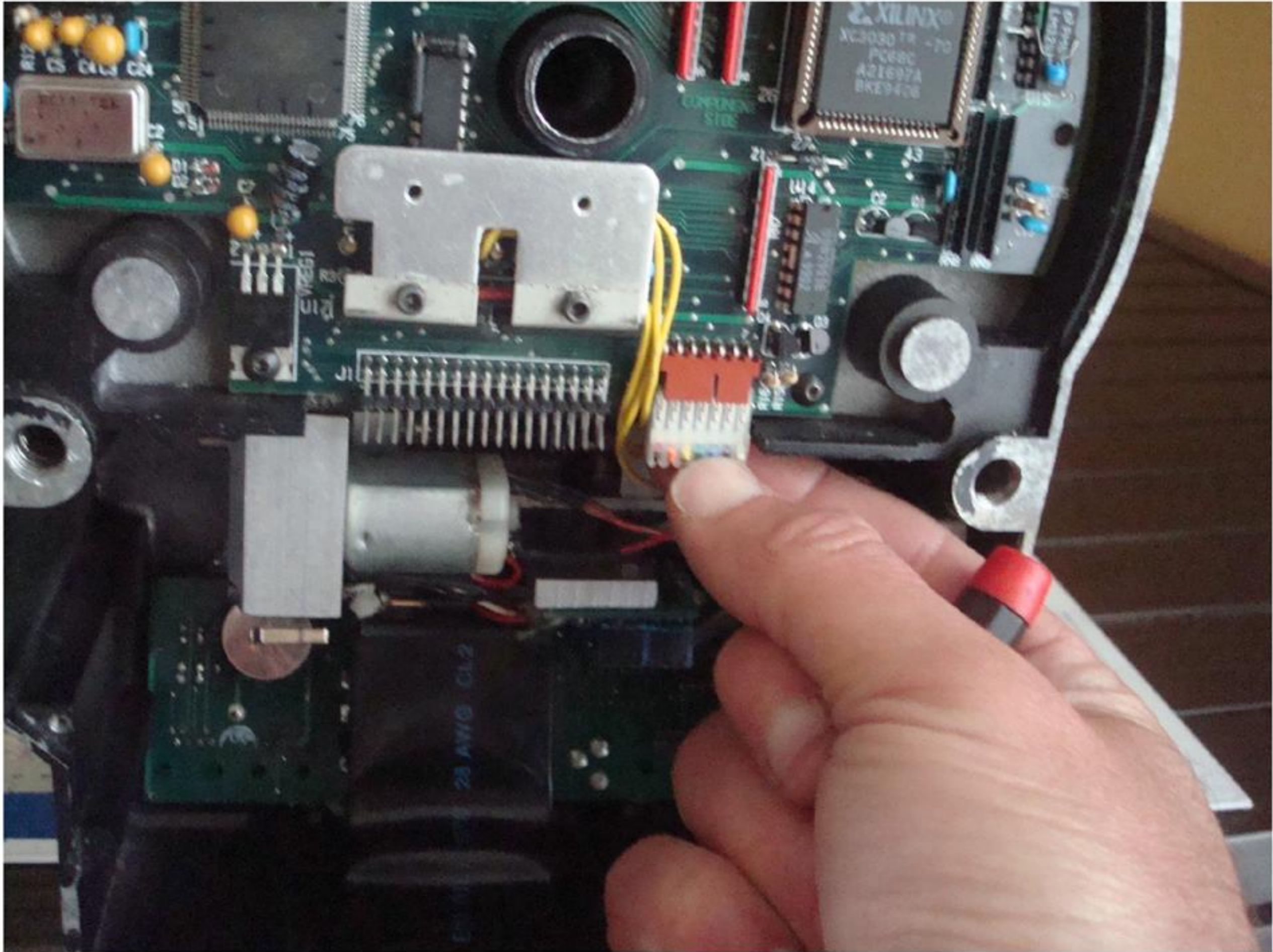
- **Remove mainboard protection**



- **Unplug ribbon cable (make lever with a flat screwdriver)**

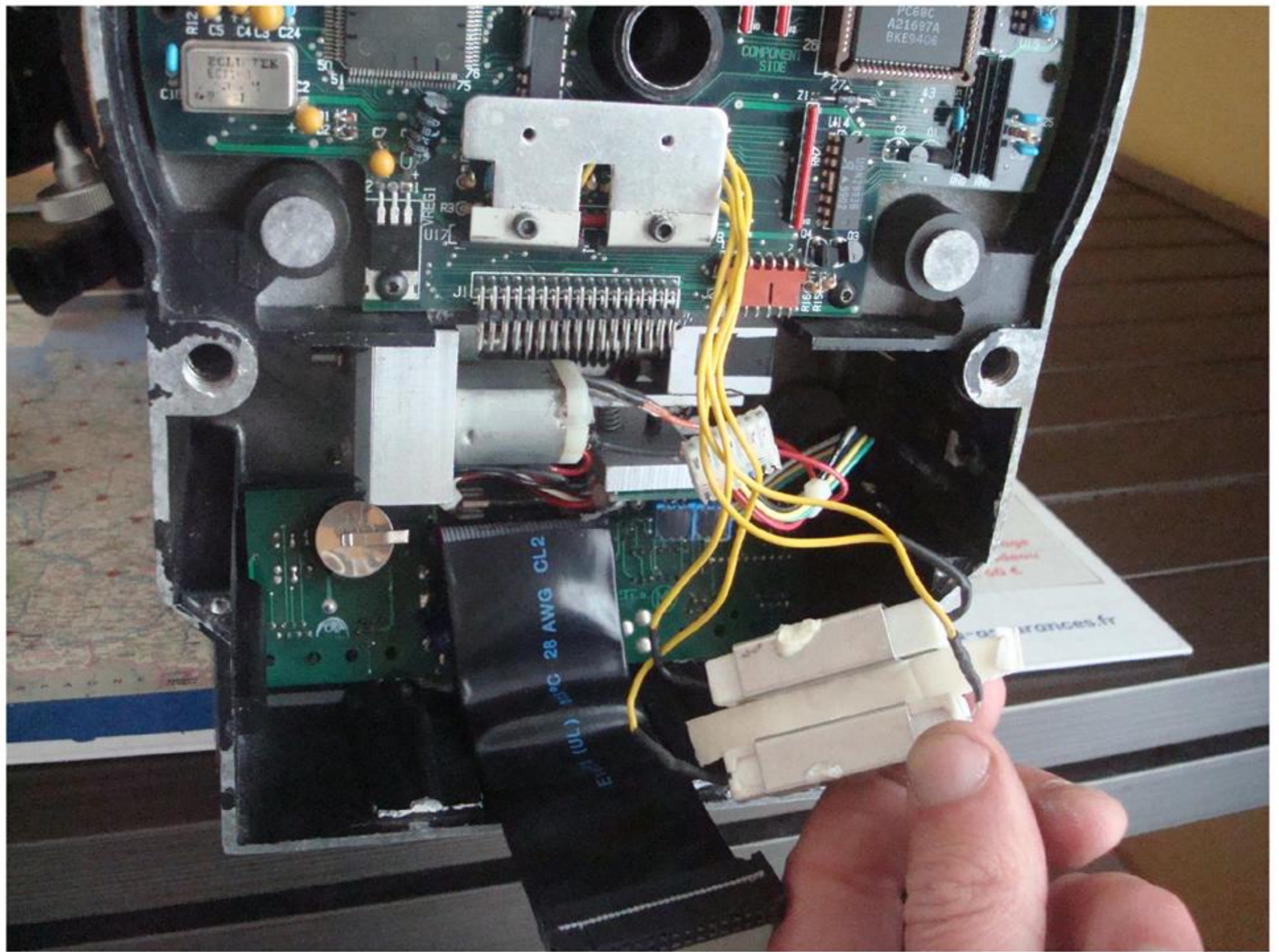
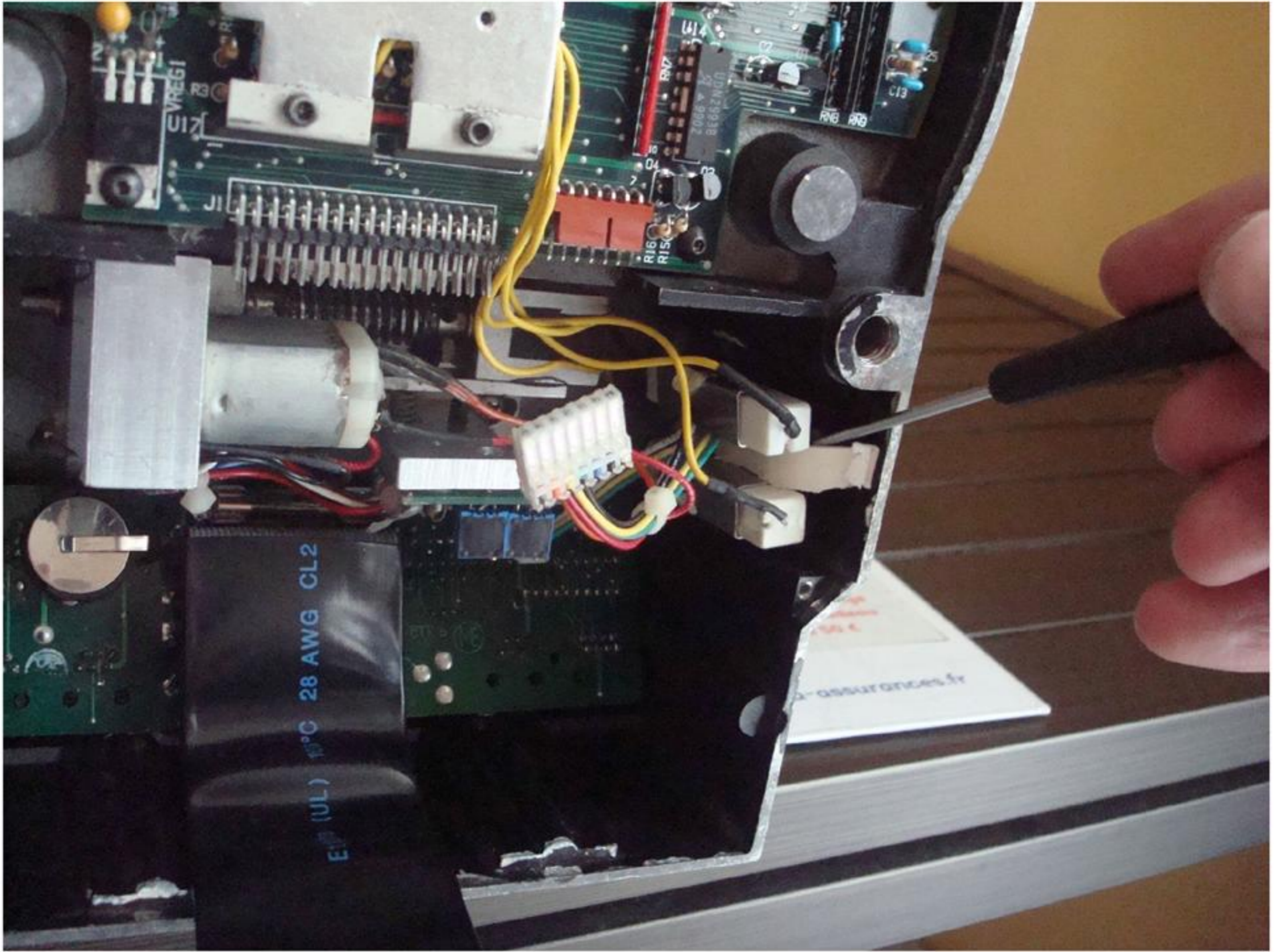


- **Unplug RA motor connector**

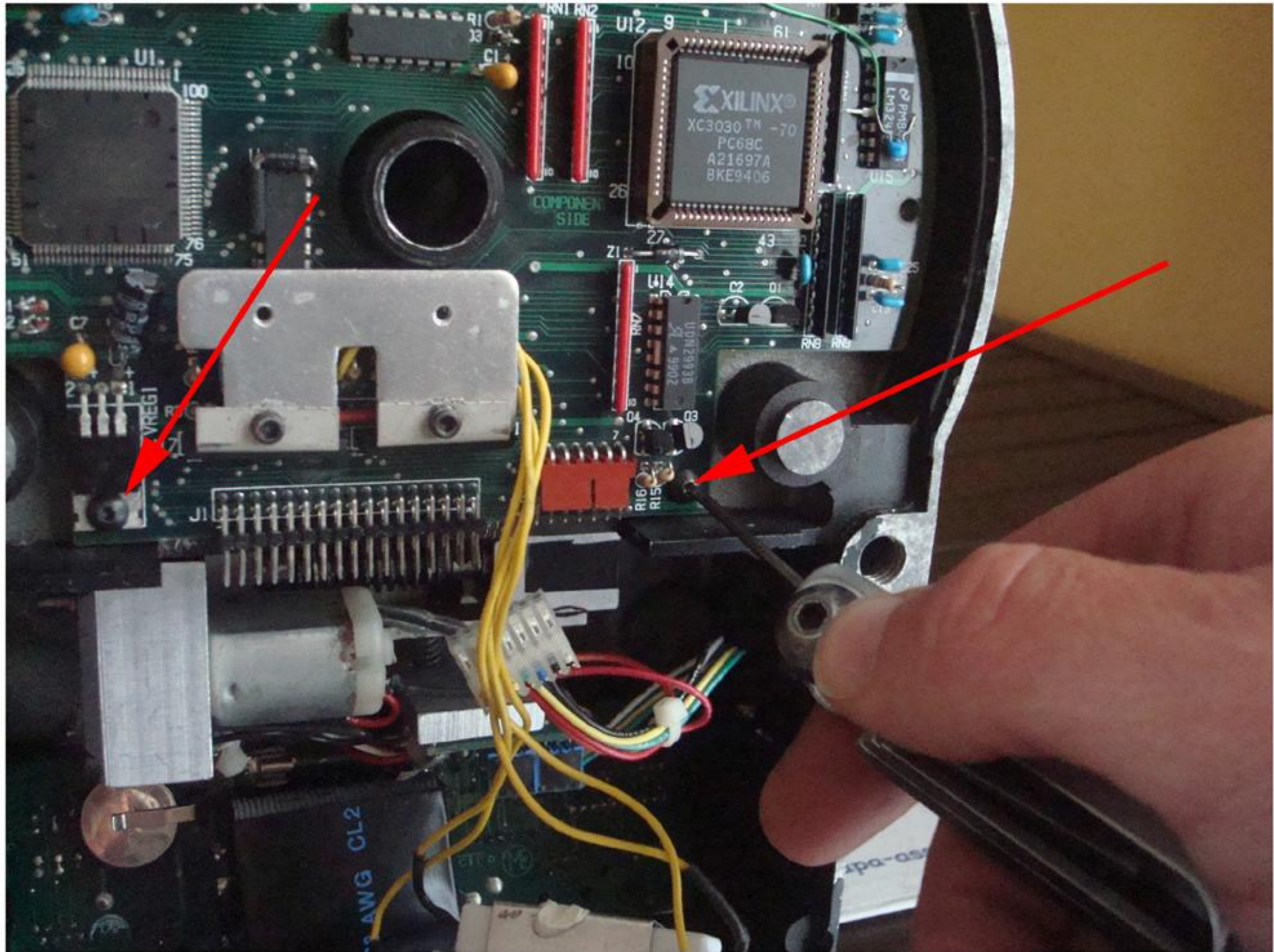


- **Unstick white resistances**

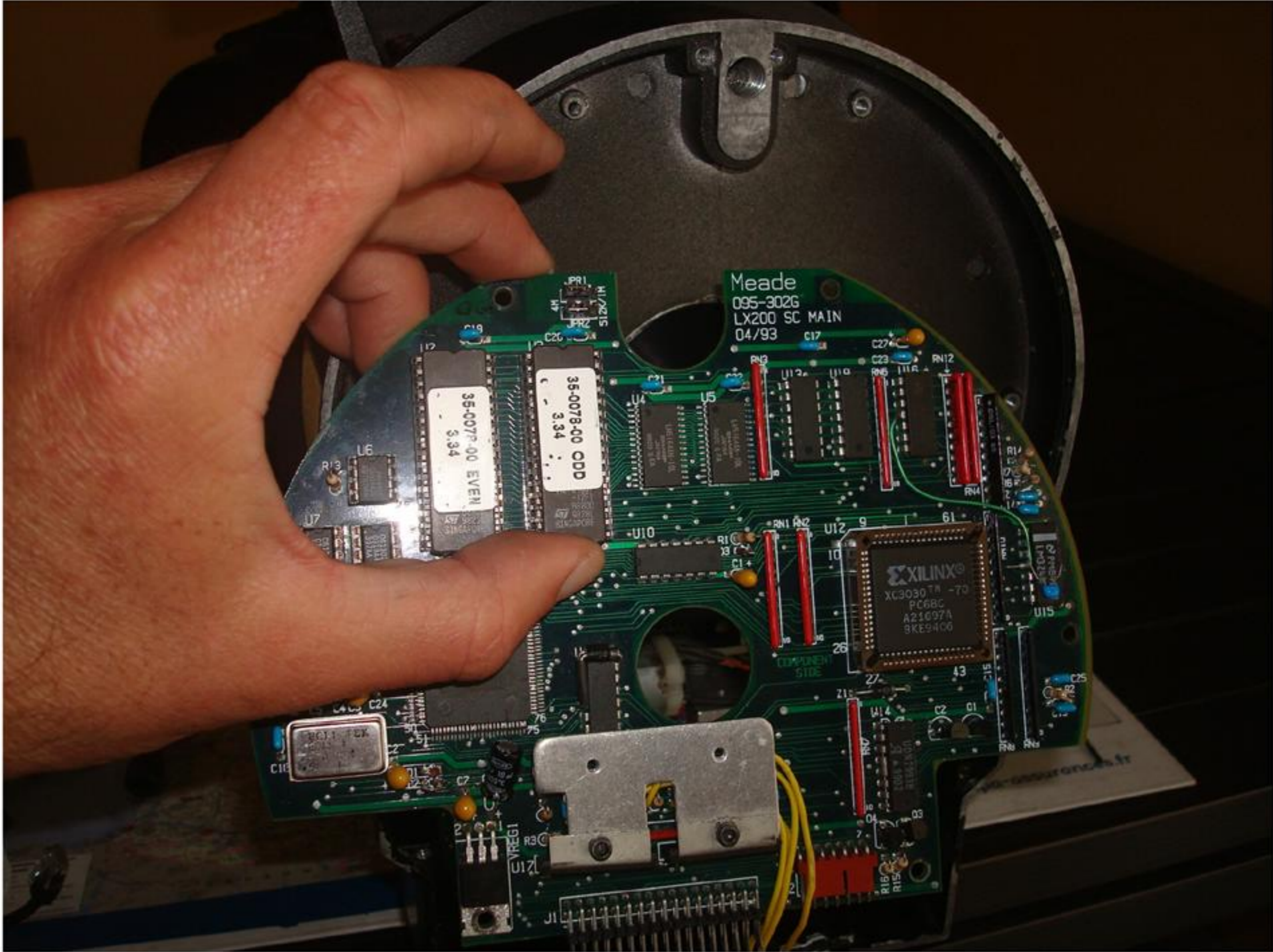




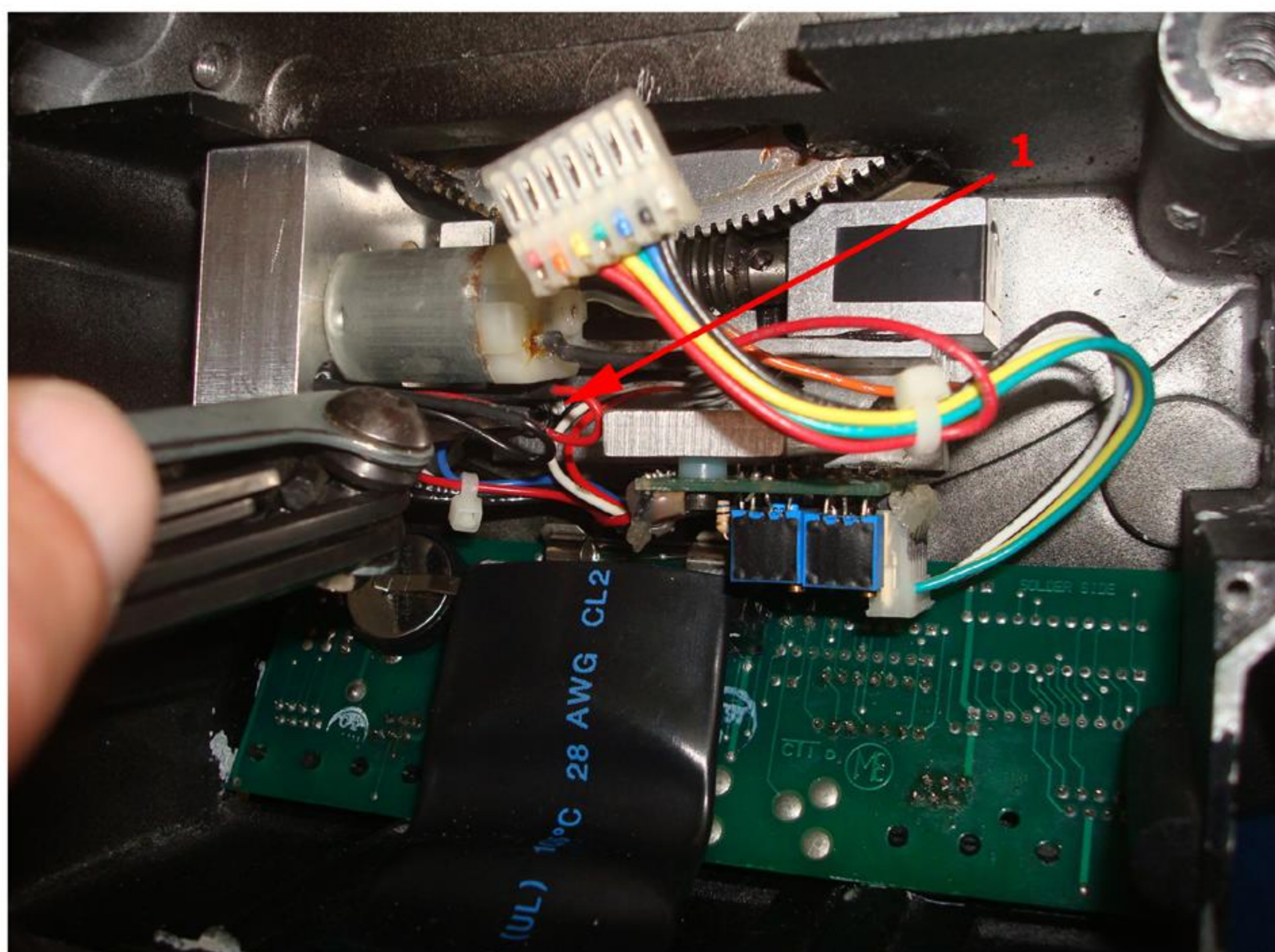
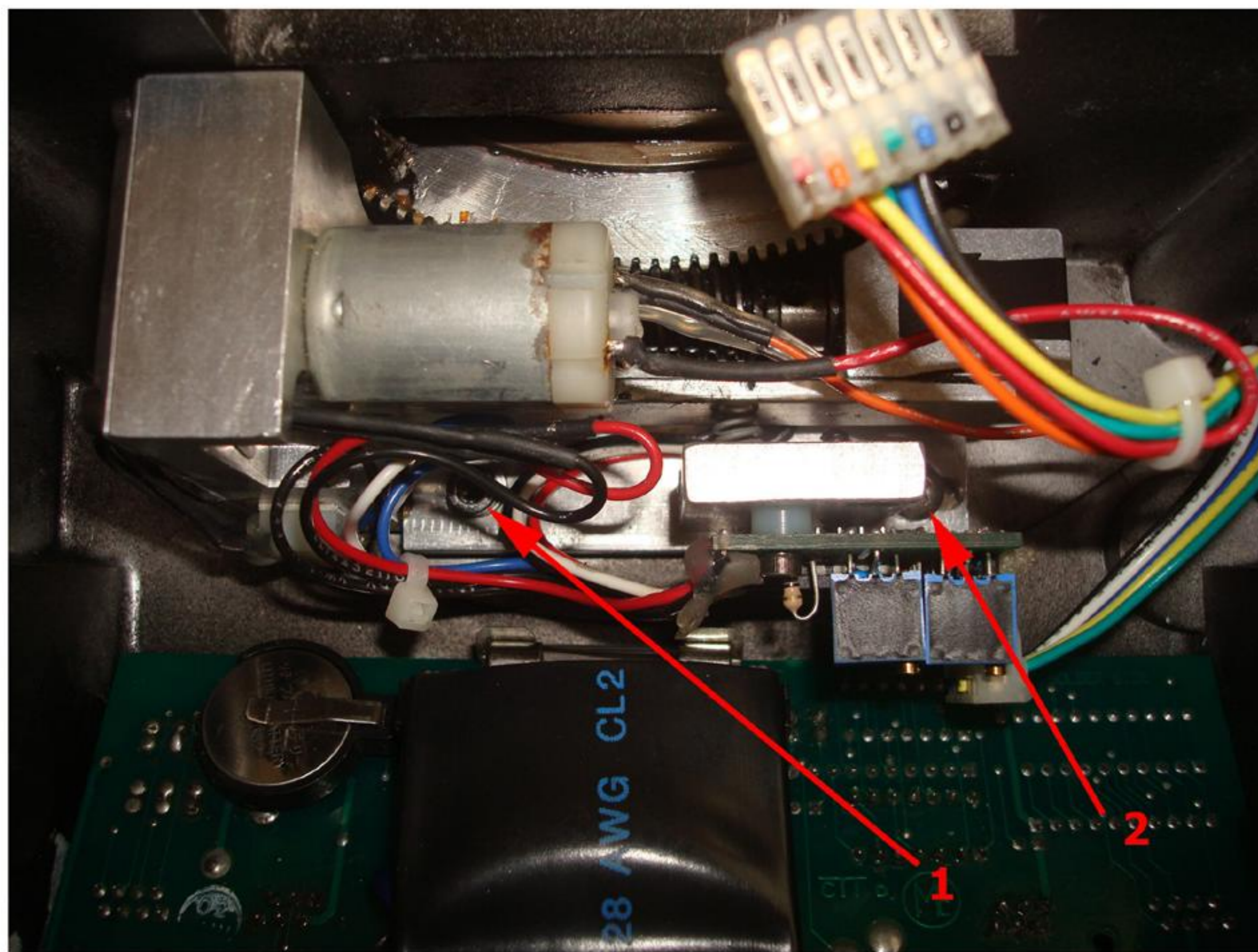
- **Unscrew the 4 screws maintains motherboard**

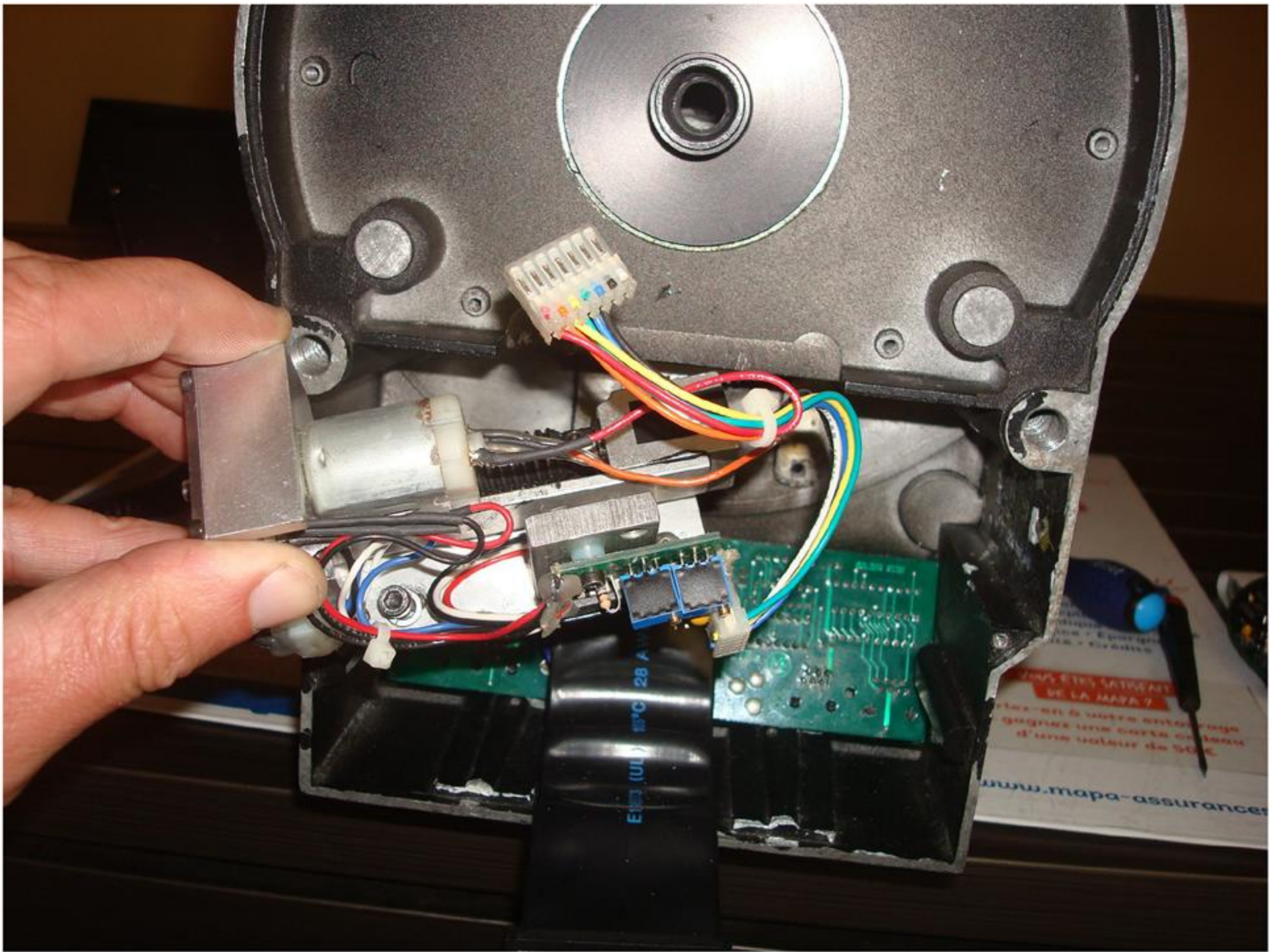


- Remove mainboard

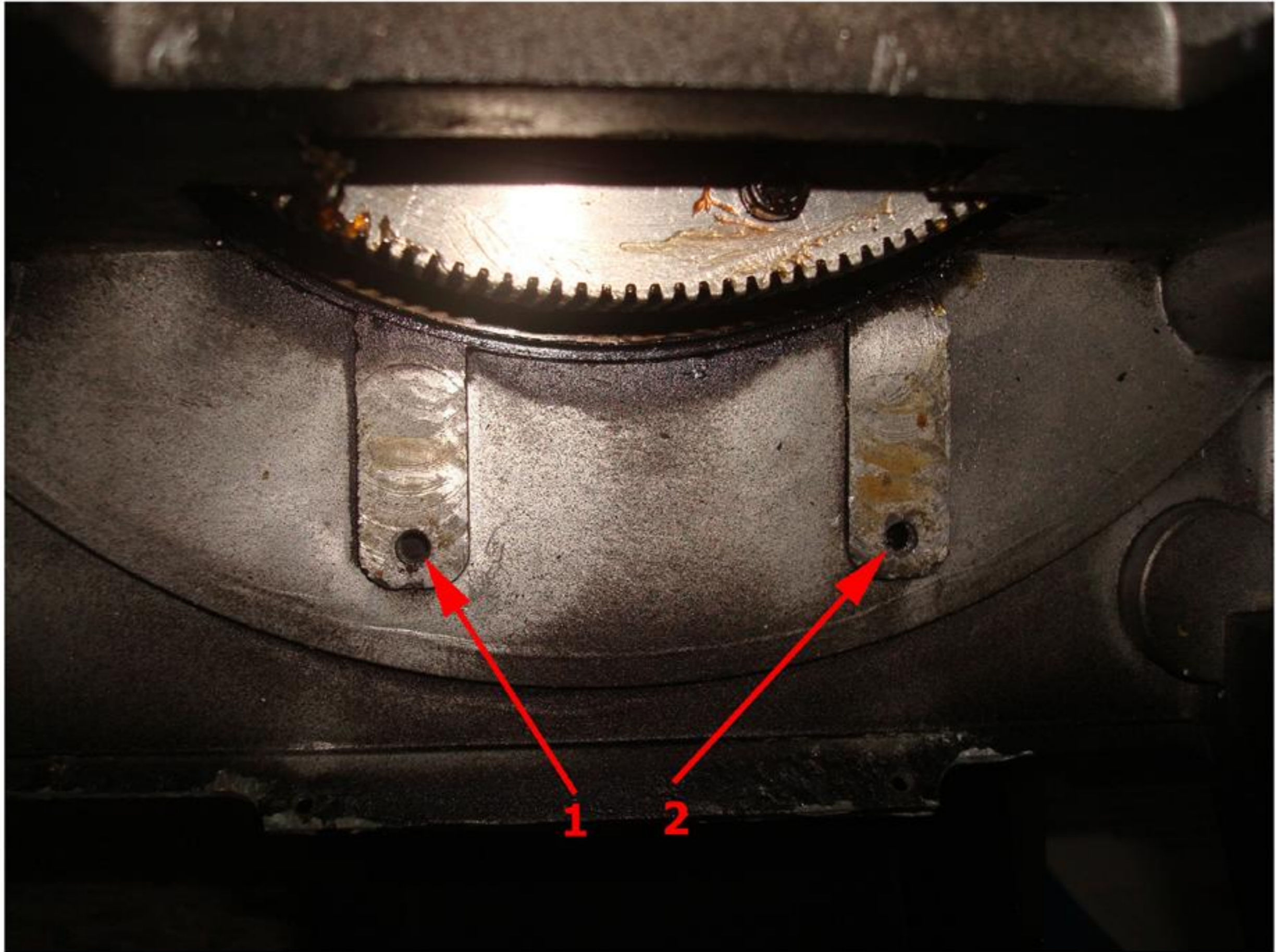


- RA Motor: unscrew screws 1 and 2 maintains RA motor





**Information → Place of thread holes maintains RA motor**



- **Remove 4 screws of power panel**



- Lift the panel through the bottom, to extract it



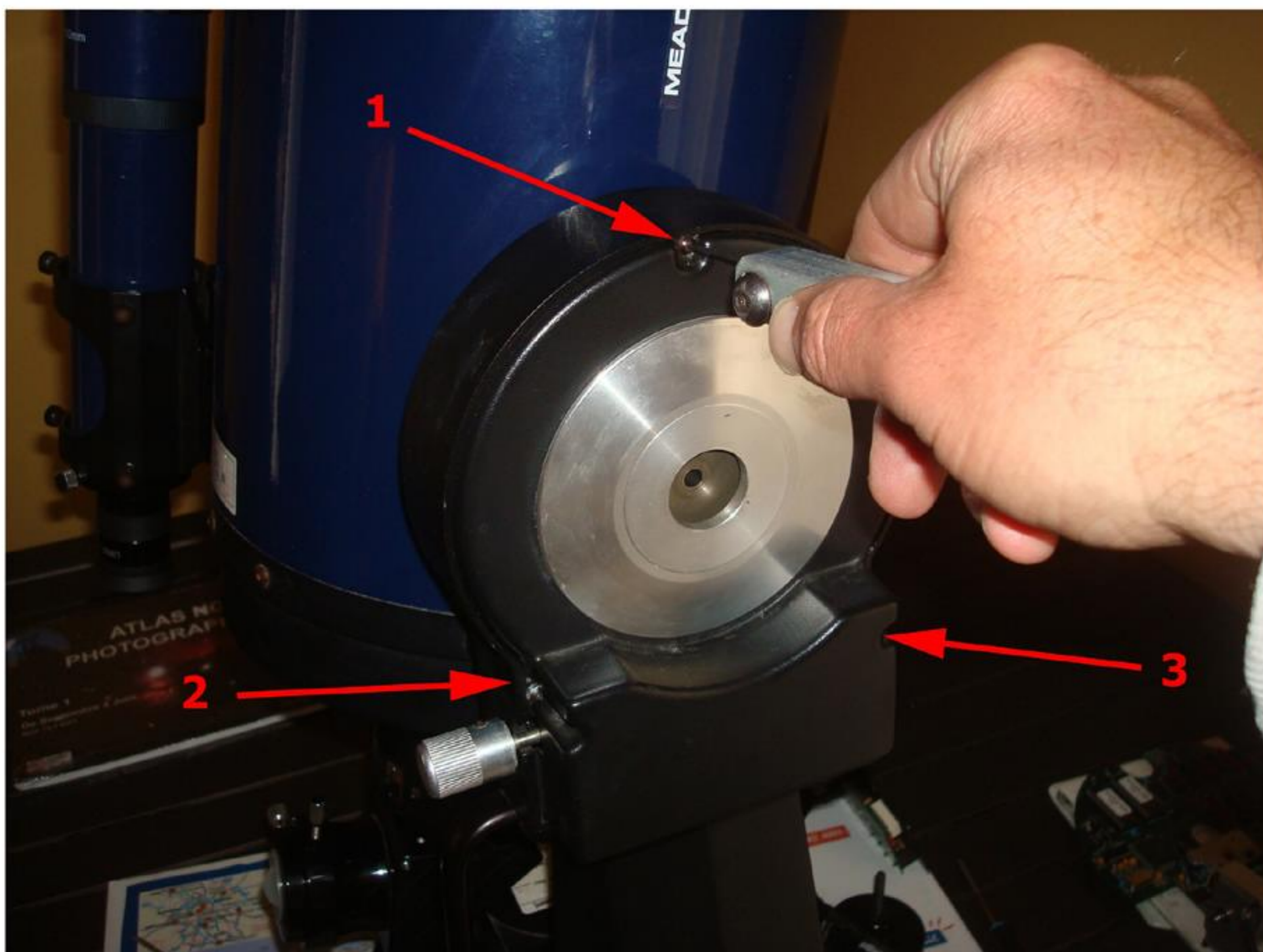


- **Unscrew and remove the thumb wheel of brake in Declination**





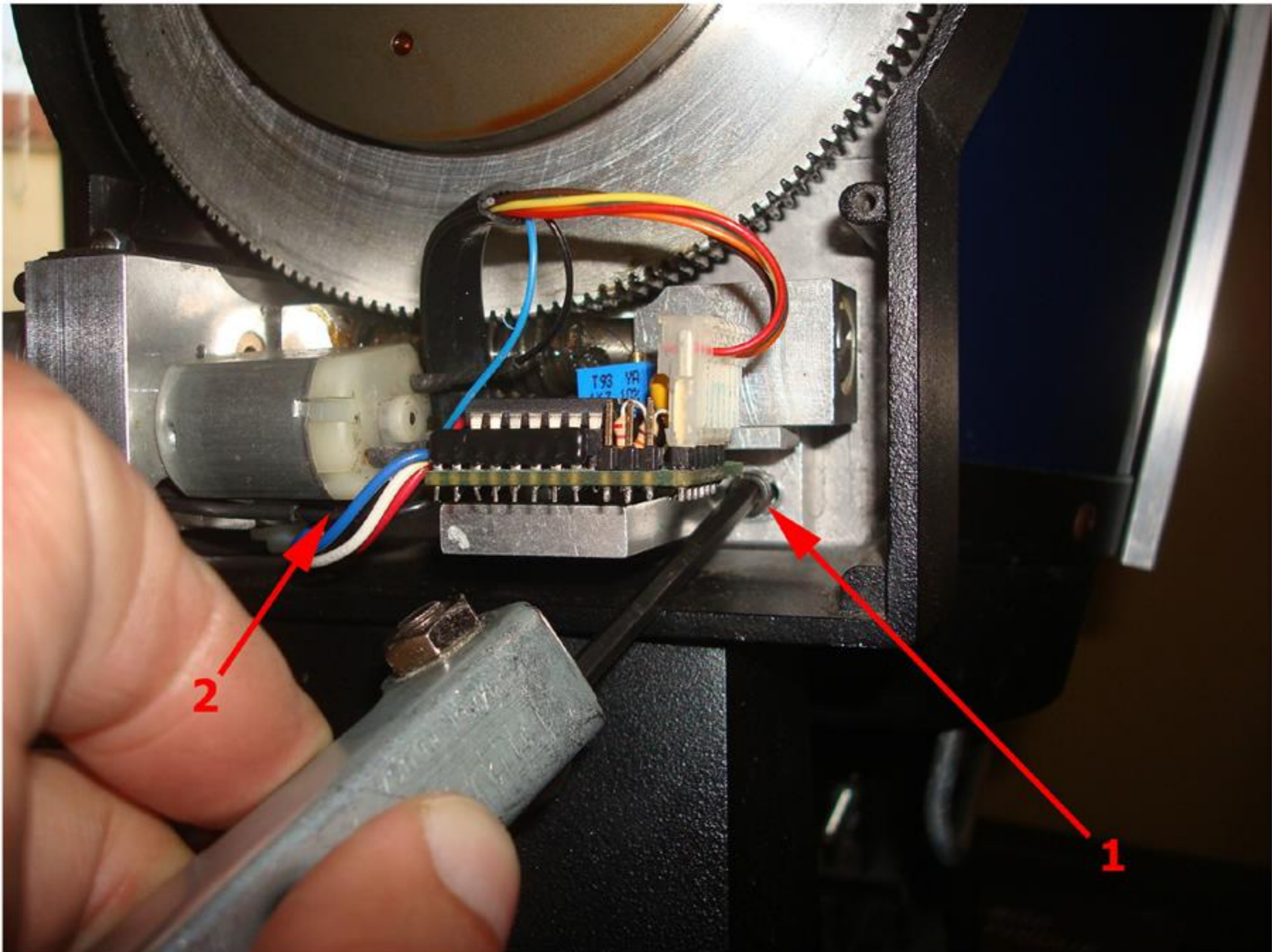
- **Unscrew 3 screws of maintains of the hood of Declination**



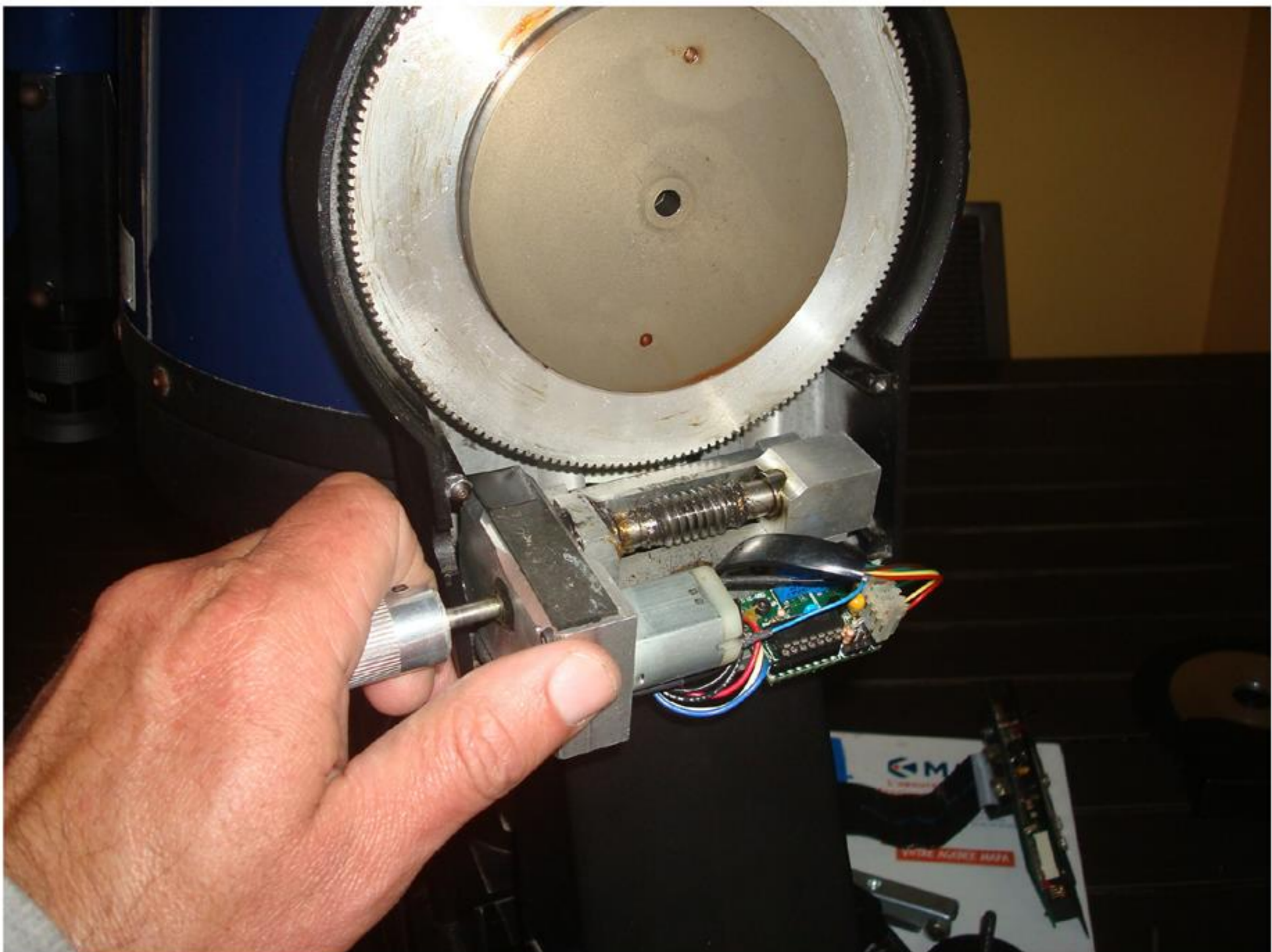
- **Remove the hood of Declination**



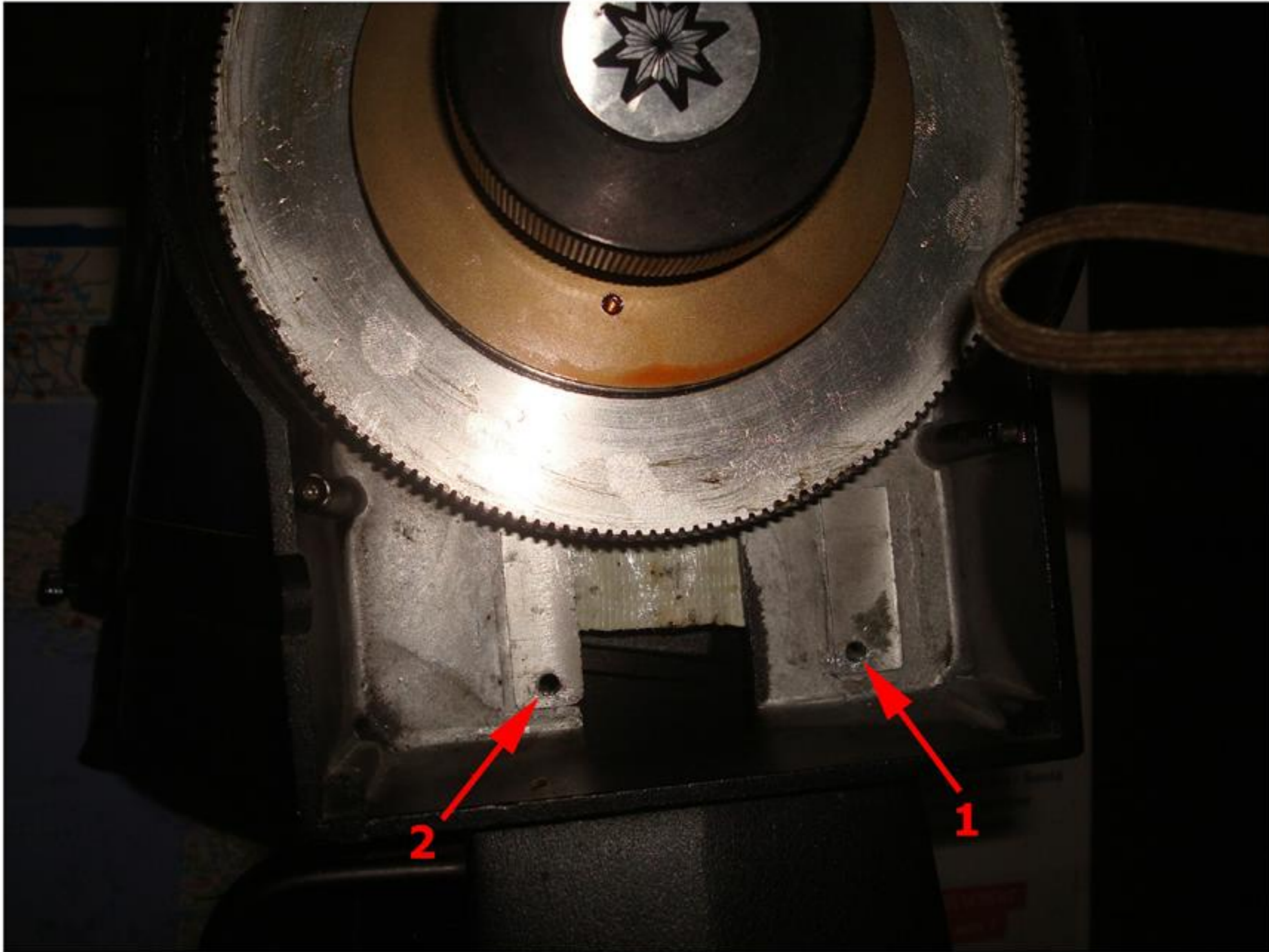
- **Unscrew screws 1 and 2 of maintains of the Declination motor**



- **Remove Declination motor**



Information → Place of thread holes maintains DEC motor



Send all these parts (don't forget cables)



## **TOOLS**

- Phillips screwdriver
- Flat screwdriver

## **Clés américaines**

- **5/64** : mainboard screws
- **1/16** : Hoods of mainboard and Declination screws
- **9/64** : Screws of Declination and RA motors